

RESEARCH ARTICLE

Life-Style and Genome Structure of Marine *Pseudoalteromonas* Siphovirus B8b Isolated from the Northwestern Mediterranean Sea

Elena Lara¹, Karin Holmfeldt^{2*}, Natalie Solonenko², Elisabet Laia Sà¹, J. Cesar Ignacio-Espinoza³, Francisco M. Cornejo-Castillo¹, Nathan C. Verberkmoes⁴, Dolores Vaqué¹, Matthew B. Sullivan^{2,3}, Silvia G. Acinas^{1*}

1 Department of Marine Biology and Oceanography, Institut de Ciències del Mar (CSIC), Passeig Marítim de la Barceloneta, 37–49, 08003 Barcelona, Spain, **2** University of Arizona, Department of Ecology and Evolutionary Biology, 1007 E. Lowell St., Tucson, AZ, United States of America, **3** University of Arizona, Department of Molecular and Cellular Biology, 1007 E. Lowell St., Tucson, AZ, United States of America, **4** Chemical Science Division, Oak Ridge National Laboratory, Oak Ridge, TN 37831, United States of America

□ Current address: School of Natural Sciences, Linnaeus University, 39182 Kalmar, Sweden

* sacinas@icm.csic.es



OPEN ACCESS

Citation: Lara E, Holmfeldt K, Solonenko N, Sà EL, Ignacio-Espinoza JC, Cornejo-Castillo FM, et al. (2015) Life-Style and Genome Structure of Marine *Pseudoalteromonas* Siphovirus B8b Isolated from the Northwestern Mediterranean Sea. PLoS ONE 10(1): e0114829. doi:10.1371/journal.pone.0114829

Academic Editor: Christina A. Kellogg, U.S. Geological Survey, UNITED STATES

Received: May 28, 2014

Accepted: November 14, 2014

Published: January 14, 2015

Copyright: © 2015 Lara et al. This is an open access article distributed under the terms of the [Creative Commons Attribution License](https://creativecommons.org/licenses/by/4.0/), which permits unrestricted use, distribution, and reproduction in any medium, provided the original author and source are credited.

Data Availability Statement: All relevant data are within the paper and its Supporting Information files.

Funding: EL was a recipient of the FPI-predoc fellowship from the Spanish Ministry of Science and Innovation (MICINN). SGA was supported by a Ramon y Cajal contract from MICINN and by MicroB3 (FP7-OCEAN-2011). KH was supported by a postdoctoral fellowship from the Swedish Research Council (623-2010-6548). This work was supported by grants MICROVIS (CTM2007-62140) and MEFISTO (CTM2013-43767-P) to DV, MICRODIVERSITY (GGL2008-00762/BOS) and PANGENOMICS

Abstract

Marine viruses (phages) alter bacterial diversity and evolution with impacts on marine biogeochemical cycles, and yet few well-developed model systems limit opportunities for hypothesis testing. Here we isolate phage B8b from the Mediterranean Sea using *Pseudoalteromonas* sp. QC-44 as a host and characterize it using myriad techniques. Morphologically, phage B8b was classified as a member of the *Siphoviridae* family. One-step growth analyses showed that this siphovirus had a latent period of 70 min and released 172 new viral particles per cell. Host range analysis against 89 bacterial host strains revealed that phage B8b infected 3 *Pseudoalteromonas* strains (52 tested, >99.9% 16S rRNA gene nucleotide identity) and 1 non-*Pseudoalteromonas* strain belonging to *Alteromonas* sp. (37 strains from 6 genera tested), which helps bound the phylogenetic distance possible in a phage-mediated horizontal gene transfer event. The *Pseudoalteromonas* phage B8b genome size was 42.7 kb, with clear structural and replication modules where the former were delineated leveraging identification of 16 structural genes by virion structural proteomics, only 4 of which had any similarity to known structural proteins. In nature, this phage was common in coastal marine environments in both photic and aphotic layers (found in 26.5% of available viral metagenomes), but not abundant in any sample (average per sample abundance was 0.65% of the reads). Together these data improve our understanding of siphoviruses in nature, and provide foundational information for a new ‘rare virosphere’ phage–host model system.

(CGL2011-26848/BOS) to SGA from the MICINN, a Gordon and Betty Moore Foundation (grant #2631) to MBS. The funders had no role in study design, data collection and analysis, decision to publish, or preparation of the manuscript.

Competing Interests: The authors have declared that no competing interests exist.

Introduction

In marine environments, phages influence global biogeochemical cycles by lysing bacterial cells which alters nutrient and organic matter fluxes, as well as the dynamics and diversity of microbial communities [1–9]. Additionally, marine phages help drive microbial evolution through phage-mediated gene transfer [10]. Despite their relevance, viral diversity is hard to measure because (i) viruses lack a universally conserved gene marker (e.g., ribosomal RNA genes in cellular organisms) [11], and (ii) most (>99%) bacteria in nature are resistant to cultivation using standard techniques [12] which limits the hosts available for virus isolation efforts [13]. Even when it is possible to grow the host organism in the lab, not all phages produce identifiable plaques [6, 14]. To circumvent these limitations, viral community diversity has been analyzed by culture-independent approaches including (i) Pulse-Field Gel Electrophoresis (PFGE) which discriminates viruses by genome size [15, 16], (ii) Randomly Amplified Polymorphic DNA PCR (RAPD) which provides a genetic fingerprint for the whole viral community [17–19] and most recently (iii) viral metagenomics (viromics) which, currently, provides fragmented sequence data for the whole double-stranded DNA (dsDNA) viral community [20–28].

Culture-independent and metagenomic methods are powerful, but each approach has its own limitations. Although PFGE is often used to estimate the size of individual phage genomes, it does not efficiently discriminate among natural viral populations with the same or similar genome size. RAPD-PCR is a valid alternative although it may under- or overestimate viral richness if genetically different DNA templates produce PCR amplicons of the same size or if a single viral genome contains more than one priming site resulting in multiple bands from the same virus in the final banding pattern. Finally, metagenomic approaches are severely database limited due to the lack of sequenced viral genomes. For example, the majority (>70%) of the predicted viral open reading frames (ORFs) in metagenomes have no similarity to previously described sequences [20, 21, 26, 29, 30]. While informatic advances are eliminating some of these issues (e.g., protein cluster organization [26] and kmer-based ecological modeling [27]), the viral metagenomes themselves, while now quantitative for dsDNA viruses [31–36] are currently not capturing RNA viruses, ssDNA viruses, and giant viruses [37–41]. Thus, new methods are needed to capture RNA and ssDNA viral sequence space, and relevant and representative isolate-based genomes are essential to better map dsDNA viral sequence space and virus–host interactions in nature.

Most sequenced marine phage genomes belong to cyanophages [42], with recent addition of phages infecting other ecologically important marine heterotrophic bacteria [13, 43, 44]. Within heterotrophic bacteria, *Pseudoalteromonas* sp. strains are members of Gammaproteobacteria, and this class of Proteobacteria may comprise up to 30% of total marine bacterioplankton with a 20 to 80% of them taking up ³H-leucine [45], reflecting active members of the microbial loop. Moreover, it has been shown that members of the Gammaproteobacteria bacterial group show the highest growth rates among their oceanic counterparts and they are subjected to higher viral pressure than other groups in the NW Mediterranean Sea [46]. Also, *Pseudoalteromonas* sp. are in many cases associated to particle attached bacterial assemblages, wherein it has been shown that Gammaproteobacteria abundance reached maximum peaks in the range of 24 to 60% of the total OTUs studied using pyrosequencing [47]. Several studies have reported the ecological and evolutionary importance of the *Pseudoalteromonas* phages [48–51]. For instance, the ecogenomic analysis of the marine *Pseudoalteromonas* phage H105/1 revealed the presence of several genes in estuarine samples and this phage showed evolutionary relationships with its host in some proteins and functional modules [49]. Moreover, some of the sequenced *Pseudoalteromonas* bacterial genomes showed genes indicative of integrated prophages [49, 52, 53]. However, there are only four marine *Pseudoalteromonas* phage

genomes sequences available in public datasets: *Pseudoalteromonas* phage PM2 (*Corticoviridae*), *Pseudoalteromonas* phage H105/1 (*Siphoviridae*), *Pseudoalteromonas* phage RIO-1 (*Podoviridae*) and *Pseudoalteromonas* phage pYD6-A (*Podoviridae*) [49, 54, 55]. Despite infecting bacteria of the same genus, these phages do not share any genes and even belong to different phage families. While PM2 is the only sequenced corticovirus, H105/1 has functional organization similar to λ -like siphoviruses [49] and RIO-1 and pYD6-A are distantly related to T7-like and N4-like podoviruses, respectively [55]. This suggests high phage diversity and the importance of phage pressure in this bacterial group.

Thus, to better expand our understanding of *Pseudoalteromonas* phage diversity, phage-host interactions in the marine environment and the genomic features of marine phages, we isolate and characterize the *Pseudoalteromonas* phage B8b.

Material and Methods

Phage isolation

Pseudoalteromonas phage B8b was obtained from Blanes Bay Microbial Observatory (BBMO, 41° 40' 13.5"N 2° 48' 00.6"E <http://www.icm.csic.es/bio/projects/icmicrobis/bbmo>), a surface coastal site in the NW Mediterranean Sea, in winter 2009. No specific permissions to sample were required for this location. Four liters of surface seawater was collected and after a 0.22 μ m prefiltration (Millipore, Whatmann), phages were concentrated by tangential flow filtration (30KDa VIVAFLOW cartridge, Sartorius) to a final volume of 20 ml. Phages were isolated using liquid enrichment cultures and plaque assays [56]. The host strain was *Pseudoalteromonas* sp. QC-44 (accession number: KM609273); which was isolated from the same marine site in 2009 using Zobell medium (1.0 g yeast extract, 5 g peptone, 15 g agar and 250 ml MQ water and 750 ml 30 kDa filtered seawater). This isolate was chosen because it was highly retrieved from our marine site. In the enrichment assay, 1 ml of viral concentrate was added to 3 ml *Pseudoalteromonas* sp. QC-44 exponentially growing in liquid Zobell medium (1.0 g yeast extract, 5 g peptone, 250 ml MQ water and 750 ml 30 kDa filtered seawater). After 24h of incubation in the dark, the mixture was centrifuged (5,000 x g, 10 min) and the supernatant was filtered through a 0.22 μ m filter to remove any remaining bacterial cells. Phage enrichment was confirmed by plaque assay, in which 100 μ l phage sample from 10x dilution series was combined with 400 μ l of liquid bacterial culture ($\sim 10^8$ cells) and plated using the agar overlay technique by adding 3.5 ml of molten soft agar (0.5% agar in Zobell; 50°C). After plating, a well-resolved plaque was picked from the lawn of host cells and eluted with MSM buffer (450 mM NaCl, 50 mM MgSO₄ x 7H₂O, 50 mM Tris base, pH 8). To ensure clonal phage isolates, each isolate was plaque purified three times. After purification, high titer phages stocks were prepared by adding 5 ml of MSM to fully lysed plates. The plates were incubated on a shaker (110 RPM) for 40 min and the phage-MSM solution was transferred to a sterile tube and centrifuged at 5,000 x g for 10 min where after the supernatants were 0.22 μ m filtered and stored at 4°C in the dark.

CsCl purification

Phages for transmission electron microscopy and virion structural proteome analysis were further purified by CsCl centrifugation [57]. Briefly, phage lysate from ~ 20 fully lysed plates was concentrated using polyethylene glycol (PEG). Here, 3.25 g NaCl was added to 50 ml of filtered phage lysate. The mixture was incubated 1 h at 4°C in the dark followed by centrifugation at 11,000 x g, 10 min. The pellet was discarded and PEG 8000 (10%) was added to the supernatant. After an incubation of 1 h at 4°C in the dark, it was centrifuged (10,000 x g, 10 min). The supernatant was discarded and the pellet was resuspended with MSM buffer. The centrifuge

tube (Ultra-Clear, Beckman, Fullerton, CA, USA) was layered with 1.125 ml each of (1) 1.7 g CsCl ml⁻¹, (2) 1.5g CsCl ml⁻¹, (3) 1.45 CsCl ml⁻¹ and (4) 1.2 g CsCl ml⁻¹, and finally topped with the viral concentrate and centrifuged (102,000 x g, 4 h). A turbid white line containing the phages was removed with a syringe (2 ml total volume) and dialyzed (Slide-A-Lyzer Dialysis Cassete G2 10 K MWCO, Rockford, IL, USA) three times in 1 liter buffer for at least 1 hour, (1 M Tris-HCl pH 8, 10 mM MgCl₂) containing three sequentially decreasing NaCl concentrations at each buffer change (3 M NaCl; 1.8 M NaCl; 0.6 M NaCl).

Electron microscopy of *Pseudoalteromonas* phage B8b

Transmission electron microscopy grids were prepared by placing 10 µl of CsCl-purified lysate (see above) onto 200 mesh formvar-coated copper grids (Ted Pella) for 5 min. The solution was subsequently removed with filter paper and grids were negatively stained with 2% uranyl acetate solution by rinsing the grids with 2 drops of the solution and staining for 45 s with a third drop. The grids were examined using a Philips CM12 microscope with an accelerating voltage of 80 kV. Viral capsid diameter and tail length were determined based on an average of several images and they were measured using ImageJ software (US National Institutes of Health, Bethesda, MD, USA; [37, 58]).

One-step growth experiments

The burst sizes and one-step growth curves were determined as described by Weiss et al. [59], with minor modifications. One milliliter of *Pseudoalteromonas* sp. QC44 overnight culture was transferred to 10 ml of fresh 20% Zobell media and incubated with shaking (120 RPM) for about 20 min, until the A₆₀₀ was ~ 0.02 (mid-log phase), which was equivalent to a viable cell count of around 10⁸ cells/ml. The concentration of bacterial cells at A₆₀₀ ~ 0.02 was verified by flow cytometry [60]. One milliliter of the bacterial culture was then transferred to an eppendorf tube and mixed with phage at a multiplicity of infection of 0.1. The mixture was incubated at room temperature for 15 min to allow phage adsorption. After this adsorption, the mixture was diluted to 10⁻² in 20 ml of 20% Zobell media to prevent further adsorption of phage. Samples were removed to enumerate total and free phage concentration. In order to detect the free phages, samples were 0.22 µm filtrated before plating. The number of phages in both cases was determined, in duplicate, using the double-agar-layer method as described above. Finally, burst size was calculated as described in [61]. Briefly, burst size was measured as the ratio of the final count of liberated phage particles to the initial count of infected bacterial cells during the latent period.

Phage specificity

To determine phage host range and bacterial susceptibility, a cross infectivity test was done where plaque assays for each virus–bacteria combination were performed with phage B8b on 52 strains of *Pseudoalteromonas* spp. as well as 34 strains of *Alteromonas* spp., *Marinobacter* spp., *Vibrio* spp., *Bacteroidetes*, *Nereida* spp., and *Erythroacter* spp. (S1 Table) using 100 µl of two different phage stock dilutions (10⁻⁵ and 10⁻⁸). Lysis was evaluated after overnight incubation in the dark. Once the bacterial strains showed phage susceptibility in the first test, a more thorough analysis was performed to determine the efficiency of infection on each strain. Here, plaque assays were performed with a range of 10x diluted phage stock and plaques were enumerated after 1 and 2 days incubation. Efficiency of infection was expressed in relative PFU (Plaque Forming Units), where the highest was set to 100%.

Pulsed-field gel electrophoresis

Phage genome size was determined by pulsed-field gel electrophoresis (PFGE) [15]. For this procedure phage lysate was concentrated by Amicon Ultra-15 centrifugal filter units (Millipore) from 5 ml to a final volume of 400 μ l. Of this, equal amounts (400 μ l) were mixed with melted 1.6% low-melting-point agarose (Pronadisa), transferred to plugs molds, left to solidify at room temperature for a few minutes and then kept for 15 minutes at 4°C. Plugs were incubated overnight at 50°C in ESP (0.5 M EDTA, pH 9, 0.1% N-laurylsarcosine and 1 mg ml⁻¹ proteinase K) and stored at 4°C until further analysis. PFGE was performed on a CHEF-DR III system (Bio-Rad) using 1% agarose gel (LE agarose SeaKem n.50005 BERLABO S.A.). The gel was run for 22h in 0.5X TBE buffer (1X TBE is 89 M Tris, 2 mM EDTA, and 89 mM boric acid, pH 8.3) at a 5.0-15.0 seconds switch time, 6V cm⁻¹ and an included angle of 120 degrees. After electrophoresis, the gel was stained with SYBR Gold (Molecular probes, 10.000X) diluted to 10⁻⁴ in 150 ml of TBE for 15 min and washed with MQ water for 15 min. Lambda Low Range (New England Biolabs) was used as molecular size marker. We did three replicates of the PFGE and all of them give us the same genome size estimation.

Viral DNA purification and genome sequencing

Viral DNA was obtained using the Lambda Wizard DNA kit (Promega Corp. Madison, WI) [62, 63]. Phage lysate from ~15 fully lysed plates were concentrated using polyethylene glycol as described earlier (CsCl purification section). One ml of Purification Resin (Promega, product A7181 Madison WI) was added to 1.5 ml of phages (the PEG pellet resuspended with MSM) and mixed gently by inverting the tube. The mixture was loaded onto a mini-column (Promega, product A7211 Madison WI) through a 5 ml syringe attached to the column, pushing the mixture through with the syringe plunger. The column was then washed with 2 ml 80% isopropanol, the syringe was removed and the mini-column placed into a 1.5 ml eppendorf tube and centrifuged (10,000 x g, 2 min, room temperature) to remove any remaining liquid. Phage DNA was eluted from the column by adding 100 μ l TE buffer (80°C), and the DNA was recovered in a 1.5 ml eppendorf tube through centrifugation (10,000 x g, 30 s, room temperature). Phage DNA was stored at -20°C. The genome was sequenced by the Life sequencing company (Valencia, Spain) using the standard shotgun sequencing reagents and a 454 GS FLX Titanium Sequencing System (Roche), according to the manufacturer's instructions.

Genome assembly and annotation

B8b phage genome sequences were assembled into 4 contigs using Newbler (Roche). In the absence of complete genome coverage, attempts were made to close the gaps using PCR and by direct Sanger sequencing. Forward and reverse primers were designed for every contig using PRIMER3 VERSION 0.4.0 [64], producing a 300–400 bp overlap among the different contigs (see S2 Table). Unfortunately, we failed to close the genome since we could not get PCR products derived from any primer and contig combination. Moreover, we did not obtain any good enough sequence from direct sequencing using any of the designed primers.

ORFs were predicted using a pseudo-automated pipeline where the ORFs were assigned by GeneMark Heuristic [65] followed by refinement through synteny and maximizing ORF size where alternative start sites were present. Gene identification and annotation was done using the BLASTP program against the NCBI non-redundant (nr) database (e-value cut off <0.001, August 2013).

Accession number of the B8b phage genes was deposited into NCBI under the following accession numbers: KJ944830, KM000061, KM000062 and KM000063.

Proteome analysis

Phages were harvested with MSM from fully lysed plates and CsCl purified as described above. The purified phage particles were prepared prior to 2d-LC-MS/MS analyses using an optimization of the FASP kit (Protein Discovery, Knoxville, TN) [66]. All reagents were provided for in the kit. Briefly, purified phages were re-suspended in 8M Urea/10mM DTT, denatured and passed over the 30kDa filter, then washed with 8M Urea and treated with Iodoacetamide (IAM) to label cysteine residues. IAM was washed away with 8M Urea and then 50mM Ammonium Bicarbonate. Sequencing grade trypsin was then added and digestion processed overnight. The next day peptides were eluted from the 30kDa filter via Ammonium Bicarbonate buffer, NaCl buffer and water/0.1% Formic acid. Three aliquots were prepared per sample and frozen at -80C until 2d-LC-MS/MS analyses. The FASP prepared peptides (>500 ng) were loaded onto the back column of a split phase 2D column (~3–5cm SCX and 3–5cm C-18) (all packing materials purchased from Phenomenex, Torrance, CA). The column was loaded to the HPLC and washed with 100% aqueous solution for 5 min, followed by a ramp from 100% aqueous to 100% organic solution for 10 min. The column [66] was connected to a front column (RP C-18, 15cm) with a nanospray source on LTQVelos and run for 5–12 h two dimensional separation of increasing salt pulses (ammonium acetate) followed by water to organic gradients (see [66]). All instrument were run in a data-dependent manner as previous described [67, 68]. To recruit peptides to the phage genomes, the resulting MS/MS spectra were searched against a database consisting of annotated phage proteins, all phage ORFs > 30 amino acids (aa) (to identify ORFs possibly missed through the annotation), and proteins from sequenced *Pseudoalteromonas* bacteria (*Pseudoalteromonas haloplanktis* TAC125, *Pseudoalteromonas* sp. TW-7, *Pseudoalteromonas atlantica* T6c, *Pseudoalteromonas tunicata* D2) and eukaryotic organisms (human and mouse) to use as indicator for false positives. Data analyses were performed using SEQUEST and filtered with DTA Select with conservative filters [67]. For proteomics, databases, peptide and protein results, MS/MS spectra and supplementary tables are archived and available at <https://maple.lsd.ornl.gov/mspipeline/sullivan/>, while MS.raw files or other extracted formats are available upon request.

Phylogenetic analysis

DNA polymerase, phage portal protein, and phage large terminase amino acid sequences of known bacteriophages (S3, S4, S5 Tables) were used to investigate the phage B8b phylogeny. Multiple sequence alignment was automatically performed using the program ClustalW (default parameters) [69]. Maximum likelihood trees were built using the JTT model [70] with bootstrap analysis (1000 replicates) using MEGA version 5.1 [71].

Fragment recruitment analysis of B8b phage on Pacific Ocean Viral metagenomics (POV)

Fragment recruitment analyses (FRA) were performed to get a sense of the phage B8b relative abundance in the 32 marine viral metagenomes from the Pacific Ocean Virome [26] (available at CAMERA (<http://camera.calit2.net>) under the following project accessions: CAM_P_0000914 and CAM_P_0000915). We used the Reciprocal Best Blast approach (RBB) [72] applying the same rationale to that employed elsewhere [43]. Briefly, individual metagenomic samples are made into a BLAST database, and then the predicted ORFs of the phage B8b are searched against it using TBLASTn. After this initial blast, hits to the POV database are extracted and become the query for a second BLAST search (BLASTx) against an internal protein genome reference database with a total size of 8,512,217 ORFs that included: (i) protein

viral genomes (Refseq Release 60; 4958 genomes and 163,830 ORFs), (ii) bacterial genomes (RefSeq Release 60; 197,527 contigs and 8,348,231 ORFs) and (iii) the *Pseudoalteromonas* phage B8b (4 Contigs, 55 ORFs). Only those metagenomic sequences that returned as a best hit a sequence from the genome of the *Pseudoalteromonas* phage B8b were extracted from the database and counted as hits for subsequent step. Finally, to calculate the relative abundance of B8b phage and two other phages used as reference genomes (the abundant Pelagiphage HTV0C10P (KC465898) and the non marine Enterobacteriophage T4 (NC_000866)) in the POV dataset, we normalized the number of hits to: 1) protein length, 2) sequencing depth and 3) mean abundances across the 32 POV metagenomes. This was calculated by dividing the number of hits (H) by the total number of sequences (N) and the amino acid length of the hit protein (L). Finally, to avoid large numbers of significant figures, the abundances were rescaled to the mean abundances (mean normalization) across all samples where the numerator is calculated from individual samples and the denominator is calculated from all the samples.

$$A_{pep} = \frac{(H \times N^{-1} \times L^{-1})}{(H \times N^{-1} \times L^{-1})}$$

Results and Discussion

Morphology and biology characterization of *Pseudoalteromonas* phage B8b

Phage B8b was isolated from Blanes Bay Microbial Observatory (BBMO), an oligotrophic surface coastal site in the NW Mediterranean Sea, and it formed clear, round plaques when grown on its host of isolation, *Pseudoalteromonas* sp. QC-44. Morphological examination showed that phage B8b belonged to the *Siphoviridae* family based on ICTV rules of nomenclature [73] and had an isometric capsid of 49.8 ± 1.6 nm in diameter connected to a long and flexible tail of 175.5 ± 3.2 nm in length (Fig. 1).

The one-step growth curve of phage B8b showed a latent period of 70 min and approximately 172 new viral particles were released from each infected *Pseudoalteromonas* sp. QC-44 cell (Fig. 2). These values differed from the marine *Pseudoalteromonas* phage PM2, which produced 300 viral particles per infected cell about 70–90 min after infection [74], as well as other marine siphoviruses, e.g. *Vibrio* phage SIO-2, which had a latent period of 45–60 min and an average burst size of 60 [75] or the cyanosiphovirus S-BBS1, which had a 540 min (9 h) of latent period and approximately 250 progeny viruses were produced per infected host cell [76]. However, this is not surprising as burst size and latent period is known to vary between phages, but also depend on which host they infect [61], nutrient availability, specific growth rate of the

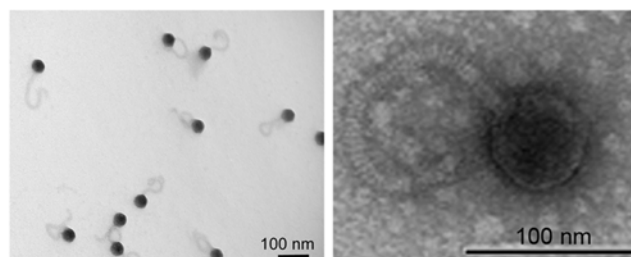


Figure 1. Transmission electron micrograph showing negatively stained *Pseudoalteromonas* phage B8b.

doi:10.1371/journal.pone.0114829.g001

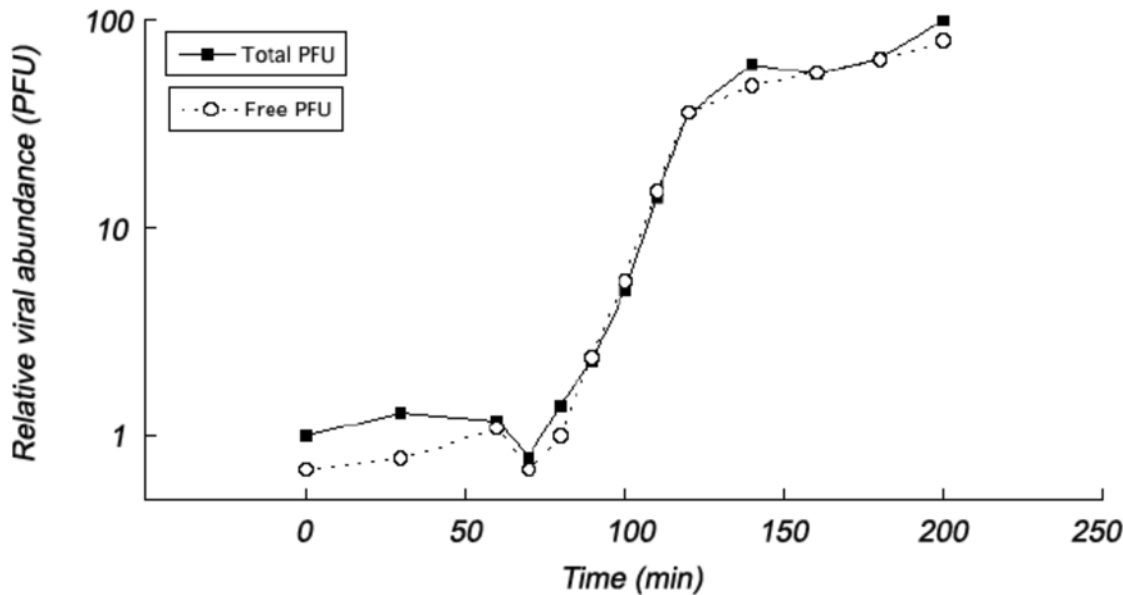


Figure 2. One-step growth curve of *Pseudoalteromonas* phage B8b on *Pseudoalteromonas* sp. QC-44 strain (■, total PFU; ○ free PFU).

doi:10.1371/journal.pone.0114829.g002

host, and temperature [77]. Additionally, marine bacteria thrive under lower nutrient concentrations than provided in the lab and, consequently, *in situ* burst size is likely smaller than the values we measured [77].

To examine the host range of the isolated phage, infectivity was tested on 52 *Pseudoalteromonas* sp., 15 *Alteromonas* sp., 8 *Vibrio* sp. strains, 3 *Marinobacterium*, sp., all those belonging to Gammaproteobacteria class plus 5 Bacteroidetes (Flavobacteria) and 6 Alphaproteobacteria (Rhodobacterales and Sphingomonadales) (S1 Table). All tested bacterial strains were isolated from the same BBMO marine station as the phage. Phage B8b only infected 3 of 52 *Pseudoalteromonas* spp. strains (Fig. 3) and the phage’s efficiency of infection range between 67–100% on the 3 different *Pseudoalteromonas* strains (Fig. 3). These narrow host range findings agree with previous *Pseudoalteromonas* phage host ranges—PM2 infected 2 of 13 *Pseudoalteromonas* strains [74], H105/5 infected 3 of 52 *Pseudoalteromonas* strains [50], and RIO-1 infected 4 of 11 *Pseudoalteromonas* strains [55]. The use of a single-host enrichment method in this study might bias the results towards a narrow host range phage [78]. However, this narrow siphovirus host range is consistent with previous findings on *Pseudoalteromonas* phages and cyanophages [50, 79] and compared with extended myovirus host range, but contrasts observations in the *Cellulophaga* phages [13, 80].

Of the 37 non-*Pseudoalteromonas* bacterial strains tested, phage B8b was only able to infect a single *Alteromonas* strain. This strain belongs to a different family (Alteromonadaceae) than the phage B8b original host (Pseudoalteromonadaceae) with only 86% nucleotide identity at the 16S rRNA locus between the two bacterial strains (Fig. 3). Also, a lower efficiency of infection (58%) was observed on *Alteromonas* sp. compared to the infection on the host of isolation (Fig. 3). Previously, phages infecting across genera boundaries have been reported, but this is commonly among large myoviruses, like cyanophages infecting *Prochlorococcus* [79], enterophage LG1 and AR1 [81], and vibriophage KVP40 [82], and the two genera do not represent different families of host microbes. Among siphoviruses, one isolate has been reported to infect two bacterial strains of different genera in wastewater [83, 84], but no such cross-genera

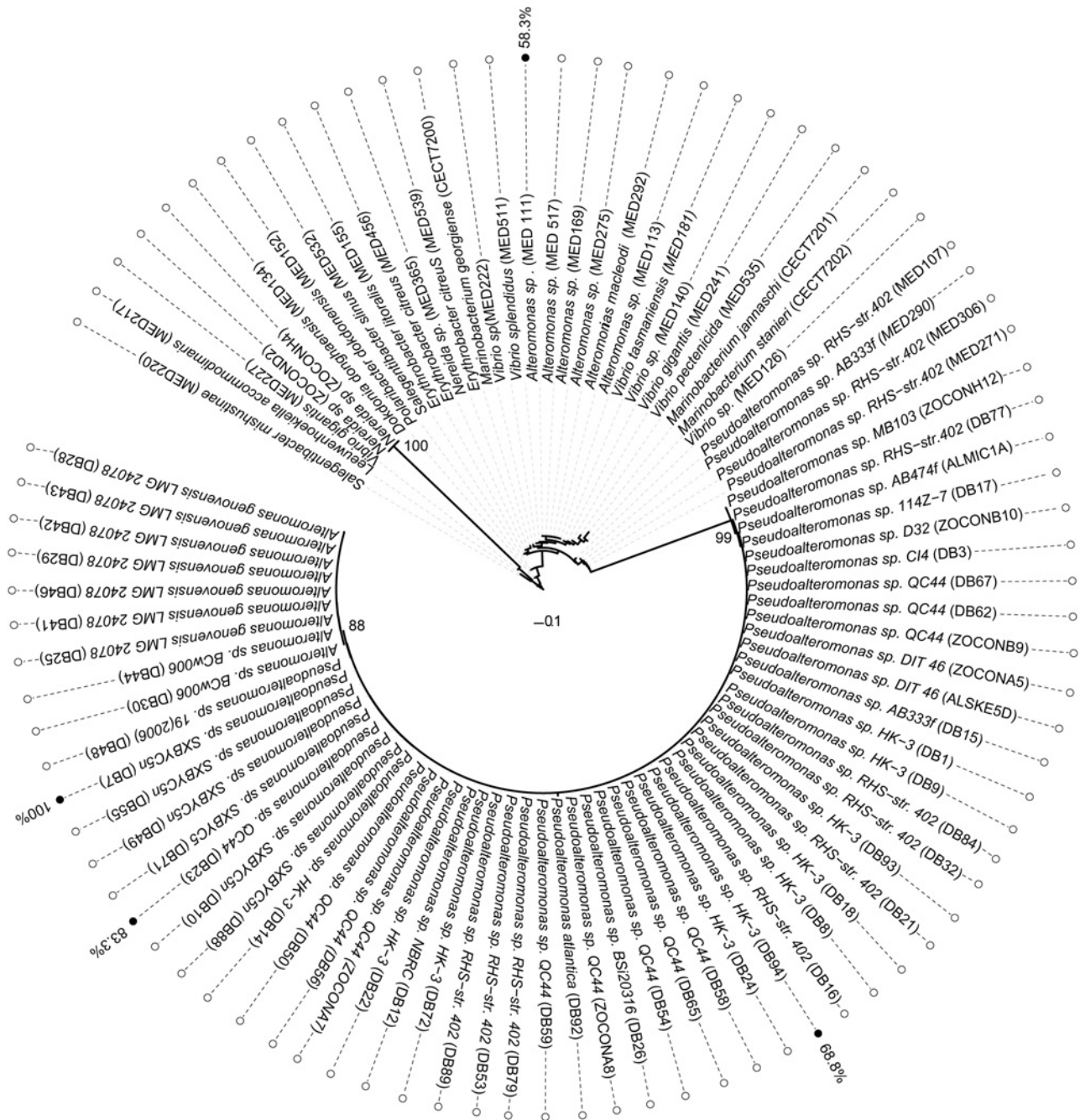


Figure 3. Phylogenetic analyses of the bacterial hosts used to test the *Pseudoalteromonas* phage B8b phage host range. Bacterial strains infected by siphovirus B8b are labeled in black and the efficiency of phage B8b in hosts infected is indicated. Efficiency is expressed in relative PFU, where the highest was set to 100% and the same phage titer dilution was used for all the bacterial strains (10^6). Names in brackets are strain designations (See [S1 Table](#) for more information).

doi:10.1371/journal.pone.0114829.g003

infections have been reported for siphoviruses from the marine environment. The fact that this phage may infect over genus boundaries highlights the potential of this phage for mediating transduction, and thereby increasing microdiversity, not only among closely related bacterial strains but also across larger taxonomic space [85].

Structure and general properties of the siphovirus B8 genome

While the PFGE analyses predicted that *Pseudoalteromonas* phage B8b had a genome size of 46 kb (S1 Fig.), the combined length of the 4 sequenced contigs was 42,700 bp. These represented two major contigs (20,209 and 19,353 bp) and two short contigs (2,155 and 1,012 bp). Although these contigs could not be closed, probably due to existence of host DNA in the phage DNA sample, the PFGE sizing as compared to the summed contig lengths suggests that about 90% of the phage genome was sequenced. Moreover, the obtained banding pattern in the PFGE gel (S1 Fig.) suggests that the phage had a concatemeric genome where multiple copies of the original DNA were linked in a continuous series of multiples of the predicted genome size. This can be produced by rolling circle replication and/or recombination and is a common replication strategy for dsDNA bacteriophages genomes [86]. The 4 genomic contigs had an average G+C content of 50% and contained 58 predicted open reading frames (ORFs; Table 1). Thirty of these ORFs had significant sequence similarity to proteins in GenBank, but only 12 could be annotated to a function (Table 1), which is similar to other previously sequenced marine *Pseudoalteromonas* phages [49, 54, 55] and siphoviruses [75, 87–89]. Among the genes with detected similarity, 40% were most similar to viruses, 27% to prophages and 33% showed similarity to genes detected in bacterial genomes (Table 1). *Pseudoalteromonas* phage B8b displayed two distinctive functional modules (Fig. 4). A replication module was found in contig 1, which had several genes bioinformatically identified as involved in DNA replication and nucleotide metabolism, such as DNA primase (Contig1_ORF10), helicase (Contig1_ORF21) and DNA polymerase (Contig1_ORF23). Furthermore, the majority of ORFs with the highest similarity to phages (9 of 12) were detected in contig 1, being 7 of them most similar to siphoviruses (Table 1). A packaging/structural module was observed in contig 2 and contained genes that encoded proteins including phage terminases (Contig2_ORF2 and ORF4), phage portal protein (Contig2_ORF6), prohead peptidase (Contig2_ORF14), and tail tape measure protein (Contig2_ORF22). No genes involved for transcription regulatory functions were identified.

Proteomic analysis

Given that only 5 viral structural proteins were identified by sequence similarity, we performed virion structural proteomic analyses to experimentally confirm identified structural genes and determine the remaining unknown structural proteins. The portal protein, prohead peptidase, tail tape measure protein as well as 8 ORFs of unknown function in contig 2 were detected as part of the phage particle (Table 1). Further, the 2 ORFs of unknown function in contig 3 are part of the phage structural particle, as well as two proteins of unknown function in contig 1. Three spectra also matched against the DNA polymerase gene, however, they were considered false positives as the total peptides detected covered <4% of the gene.

Phylogenetic relationships

In order to get insights into the phylogenetic relatedness of phage B8b compared to other phages, three relevant genes were compared phylogenetically to similar genes: the B8b DNA polymerase, the phage large terminase, and phage portal protein (S2, S3, S4 Figs. and S3, S4, S5 Tables).

DNA polymerase genes are crucial in genomic replication and mutagenic repair and it has been used to define phylogenetic relationships for novel isolated phages [75, 90, 91]. Surprisingly, the B8b DNA polymerase clustered together with several myoviruses (S2 Fig.). Two of them were isolated from marine bacteria (*Edwardsiella* phage MSW-3 and *Klebsiella* phage JDOO1) [92, 93] and most of them were lytic phages, except for *Vibrio* phage CP-T1 that is known to be temperate (i.e., capable of forming a lysogen; [94]). Although DNA polymerases

Table 1. Genomic annotation of *Pseudoalteromonas siphovirus B8b* and structural proteomic results.

Contig_ORF	Genomic data						Proteomic data					
	Nucleotide start position	Nucleotide end position	Nucleotide strand	Product length (aa)	Product % aa ID	Predicted identity or function of product	Strain with closest hit (Evalue)	Accession number	Taxonomy	Sequence count	Spectral count	Sequence coverage (%)
Contig1_ORF1	7	630	+	208		Hypothetical phage protein	Non-significant					
Contig1_ORF2	676	1221	+	182	42.0	dUTPase	<i>Lactococcus</i> phage Q33 (8.0E-13)	AFV51054.1	<i>Siphoviridae</i> , <i>Caudovirales</i>			
Contig1_ORF3	1218	1625	+	136		Hypothetical phage protein	Non-significant					
Contig1_ORF4	1622	2128	+	169		Hypothetical phage protein	Non-significant					
Contig1_ORF5	2121	2456	+	112		Hypothetical phage protein	Non-significant					
Contig1_ORF6	2536	3297	+	254	37.0	DNA binding protein	<i>Salmonella</i> phage E1 (4.0E-45)	WP_003849806.1	<i>Siphoviridae</i> , <i>Caudovirales</i>			
Contig1_ORF7	3282	3500	+	73		Hypothetical phage protein	Non-significant					
Contig1_ORF8	3503	3760	+	86		Hypothetical phage protein	Non-significant					
Contig1_ORF9	3753	4376	+	208		Hypothetical phage protein	Non-significant					
Contig1_ORF10	6914	4560	-	785	35.0	DNA primase	<i>Salmonella</i> phage FSL SP-062 (1.0E-72)	AGF89287.1	<i>Siphoviridae</i> , <i>Caudovirales</i>			
Contig1_ORF11	7155	6919	-	79		Hypothetical phage protein	Non-significant					
Contig1_ORF12	7580	7152	-	143	47.0	Conserved hypothetical phage protein	<i>Edwardsiella</i> phage MSW-3 (6.0E-101)	YP_007348969	<i>Myoviridae</i> , <i>Caudovirales</i>			
Contig1_ORF13	8746	7580	-	389		Hypothetical phage protein	Non-significant					
Contig1_ORF14	9873	8749	-	375	33.0	Conserved hypothetical phage protein	<i>Salmonella</i> phage FSL SP-062 (2.0E-33)	AGF89282.1	<i>Siphoviridae</i> , <i>Caudovirales</i>	3	8	10.9

(Continued)

Table 1. (Continued)

Genomic data										Proteomic data			
Contig_ORF	Nucleotide start position	Nucleotide end position	Nucleotide position	Strand	Product length (aa)	% aa ID	Predicted identity or function of product	Strain with closest hit (Evalue)	Accession number	Taxonomy	Sequence count	Spectral count	Sequence coverage (%)
Contig1_ORF15	10783	9878	-	-	302	42.0	RecT protein	<i>Marichromatium purpuratum</i> 984 (1.0E-4)	WP_005220619	Gammaproteobacteria, Chromatiales			
Contig1_ORF16	11037	10813	-	-	75	51.0	Conserved phage protein	<i>Acinetobacter</i> Ac42 (2.0E-20)	YP_004009376	Myoviridae, Caudovirales			
Contig1_ORF17	11117	11281	+	+	55		Hypothetical phage protein	Non-significant					
Contig1_ORF18	11286	11549	+	+	88		Hypothetical phage protein	Non-significant					
Contig1_ORF19	11546	11743	+	+	66		Hypothetical phage protein	Non-significant					
Contig1_ORF20	11709	11891	+	+	61		Hypothetical phage protein	Non-significant					
Contig1_ORF21	11958	13628	+	+	557	35.0	Helicase	<i>Salmonella</i> phage FSL SP-062 (3.0E-92)	AGF89284.1	Siphoviridae, Caudovirales			
Contig1_ORF22	13621	13857	+	+	79		Hypothetical phage protein	Non-significant					
Contig1_ORF23	13847	16057	+	+	737	39.0	DNA polymerase	<i>Salmonella</i> phage FSL SP-062 (9.0E-145)	AGF89344.1	Siphoviridae, Caudovirales	2	3	3.9
Contig1_ORF24	16103	16705	+	+	201		Hypothetical phage protein	Non-significant					
Contig1_ORF25	16705	16938	+	+	78		Hypothetical phage protein	Non-significant					
Contig1_ORF26	17471	17001	-	-	157	40.0	Conserved phage protein	<i>Klebsiella</i> phage phiKO2 (2.0E-17)	YP_006634.1	Siphoviridae, Caudovirales			
Contig1_ORF27	17695	17468	-	-	76	41.0	Conserved phage protein	<i>Alisewanella jeotgali</i> KCTC 22429 (7.0E-11)	WP_008951684	Gammaproteobacteria, Alteromonadales			

(Continued)

Table 1. (Continued)

Contig_ORF	Genomic data					Proteomic data						
	Nucleotide start position	Nucleotide end position	Nucleotide Strand	Product length (aa)	% aa ID	Predicted identity or function of product	Strain with closest hit (Evalue)	Accession number	Taxonomy	Sequence count	Spectral count	Sequence coverage (%)
Contig1_ORF28	19877	17688	-	730	30.0	Conserved Hypothetical phage protein	<i>Marinobacterium stanieri</i> S30 (5.0E-28)	WP_010325175	Gammaproteobacteria, Alteromonadales (Prophage)	4	4	7.8
Contig1_ORF29	20170	19874	-	99	33.0	Conserved Hypothetical phage protein	<i>Pseudoalteromonas</i> sp. BSi20652 (7.0E-5)	WP_008172253	Gammaproteobacteria, Alteromonadales			
Contig2_ORF1	256	486	+	77		Hypothetical phage protein	Non-significant					
Contig2_ORF2	410	1006	+	199	25.0	Small terminase subunit	<i>Escherichia</i> phage vB_EcoM_ECO1230-10 (7.12E-7)	ADE87936.1	Myoviridae, Caudovirales			
Contig2_ORF3	990	1502	+	171	28.0	Conserved hypophotal phage protein	<i>Shewanella frigidimarina</i> NCIMB 400 (8.32E-4)	YP_750332	Gammaproteobacteria, Alteromonadales			
Contig2_ORF4	1519	3510	+	664	59.0	Phage large terminase subunit	<i>Marinobacterium stanieri</i> S30 (3.00E-125)	WP_010322164	Gammaproteobacteria, Alteromonadales (Prophage)			
Contig2_ORF5	3514	3729	+	72		Hypothetical phage protein	Non-significant			5	10	76.40
Contig2_ORF6	3719	5218	+	500	40.0	Phage portal protein	<i>Marinobacterium stanieri</i> S30(5.0E-126)	WP_010322159	Gammaproteobacteria, Alteromonadales (Prophage)	18	46	42.20
Contig2_ORF7	5232	5660	+	143		Hypothetical phage protein	Non-significant					
Contig2_ORF8	5662	6108	+	149		Hypothetical phage protein	Non-significant					
Contig2_ORF9	6053	6283	+	77		Hypothetical phage protein	Non-significant					
Contig2_ORF10	6264	6524	+	87		Hypothetical phage protein	Non-significant					
Contig2_ORF11	6821	6525	-	99	31.0	Conserved hypophotal phage protein	<i>Pseudoalteromonas</i> phage RIO-1 (2.0E-6)	YP_008051111.1	Podoviridae, Caudovirales			

(Continued)

Table 1. (Continued)

Genomic data										Proteomic data			
Contig_ORF	Nucleotide start position	Nucleotide end position	Nucleotide position	Strand	Product length (aa)	% aa ID	Predicted identity or function of product	Strain with closest hit (Evalue)	Accession number	Taxonomy	Sequence count	Spectral count	Sequence coverage (%)
Contig2_ORF12	7423	6803	-	-	207	40.0	Conserved Hypothetical phage protein	<i>Pseudoalteromonas</i> phage RIO-1 (2.0E-6)	YP_008051111.1	Podoviridae, Caudovirales	6	10	37.30
Contig2_ORF13	7800	7423	-	-	126		Hypothetical phage protein	Non-significant			6	22	57.90
Contig2_ORF14	7912	9966	+	+	685	44.0	Peptidase U35 phage prohead HK97	<i>Marinobacterium stanieri</i> S30 (3.0E-168)	WP_010322158	Gammaproteobacteria, Alteromonadales (Prophage)	28	937	42.70
Contig2_ORF15	10022	10360	+	+	113	48.0	Conserved hypothetical phage protein	<i>Marinobacterium stanieri</i> S30 (1.0E-17)	WP_010322157	Gammaproteobacteria, Alteromonadales (Prophage)	7	67	43.00
Contig2_ORF16	10341	10682	+	+	114		Hypothetical phage protein	Non-significant			3	3	33.60
Contig2_ORF17	10675	11298	+	+	208	41.0	Conserved hypothetical phage protein	<i>Vibrio crassostreae</i> (3.0E-44)	WP_017059000	Gammaproteobacteria, Vibrionales			
Contig2_ORF18	11295	11771	+	+	159	30.0	Conserved Hypothetical phage protein	<i>Marinobacterium stanieri</i> S30 (4.0E-4)	WP_010322154	Gammaproteobacteria, Alteromonadales (Prophage)	3	3	24.40
Contig2_ORF19	11774	12148	+	+	125	35.0	Chaperone GroES	<i>Pseudoalteromonas tunicata</i> (1.0E-4)	WP_009840504	Gammaproteobacteria, Alteromonadales			
Contig2_ORF20	12148	12318	+	+	57		Hypothetical phage protein	Non-significant					
Contig2_ORF21	12318	13079	+	+	254	40.0	Conserved hypothetical phage protein	<i>Marinobacterium stanieri</i> S30 (8.01E-39)	WP_010322152	Gammaproteobacteria, Alteromonadales (Prophage)	9	290	54.90
Contig2_ORF22	13148	17356	+	+	1403	32.0	Phage tail tape measure protein TP901, core region	<i>Marinobacterium stanieri</i> S30 (1.29E-161)	WP_010322151	Gammaproteobacteria, Alteromonadales (Prophage)	46	74	43.50

(Continued)

Table 1. (Continued)

Genomic data										Proteomic data			
Contig_ORF	Nucleotide start position	Nucleotide end position	Nucleotide position	Strand	Product length (aa)	% aa ID	Predicted identity or function of product	Strain with closest hit (Evalue)	Accession number	Taxonomy	Sequence count	Spectral count	Sequence coverage (%)
Contig2_ORF23	17359	17769	17769	+	137	39.0	Conserved hypothetical phage protein	<i>Pseudoalteromonas</i> sp. S9 (8.0E-17)	WP_010490777	Gammaproteobacteria, Alteromonadales			
Contig2_ORF24	17769	19343	19343	+	525	35.0	Conserved Hypothetical phage protein	<i>Pseudomonas aeruginosa</i> (7.0 E-73)	WP_019396974.1	Gammaproteobacteria, Pseudomonadales	12	21	36.19
Contig3_ORF1	9	1694	1694	+	562	38.0	Conserved hypothetical phage protein	<i>Pseudomonas aeruginosa</i> (5.0 E-82)	WP_019396974.1	Gammaproteobacteria, Pseudomonadales	12	38	27.63
Contig3_ORF2	1694	2154	2154	+	153		Hypothetical phage protein	Non-significant			3	3	30.10
Contig4_ORF1	12	350	350	+	113	29.0	Conserved hypothetical phage protein	<i>Klebsiella oxytoca</i> (9.0E-5)	WP_004131755	Gammaproteobacteria, Enterobacteriales			
Contig4_ORF2	343	609	609	+	89		Hypothetical phage protein	Non-significant					
Contig4_ORF3	824	699	699	-	42		Hypothetical phage protein	Non-significant					

doi:10.1371/journal.pone.0114829.t001

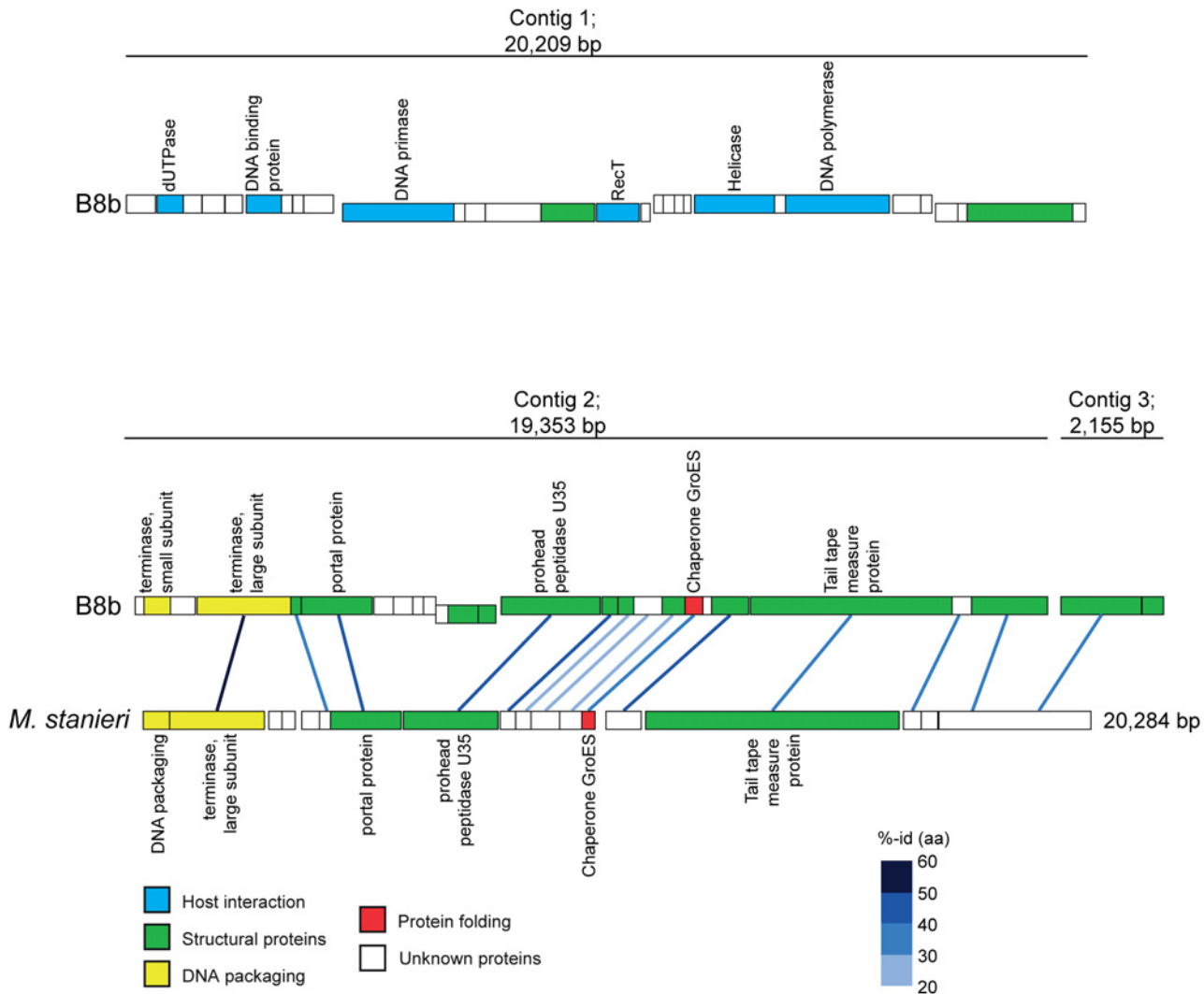


Figure 4. Genome structure of *Pseudoalteromonas* phage B8b represented by 3 contigs and genome comparison with the putative prophage of *Marinobacterium stanieri*. Lines drawn between the genomes represent shared sequence similarity, which is given next to each line as percentage amino acid (aa) identity (id).

doi:10.1371/journal.pone.0114829.g004

have been suggested to be good phylogenetic markers for investigating viral phylogeny since they offer the greatest number of viral homologs [95], our results showed that this gene’s phylogeny may be incongruent with electron microscopy- and genome-based taxonomy.

The phage large terminase and phage portal proteins are commonly highly conserved among phage genes, possibly due to their specific enzymatic functions [96], and phage phylogeny has been investigated using these genes in several other studies [89, 94, 96–98]. The phage terminases are DNA packaging enzymes that contain the ATPase activity that powers DNA translocation and most terminases also contain an endonuclease that during DNA packaging cuts concatemeric DNA into genome lengths. Terminases must also recognize viral DNA in a pool that may include host DNA [86, 99]. Phage portal proteins, one the other hand, are structurally associated with the phage capsid and facilitate DNA packaging during head assembly [86]. Phylogenetically, both B8b terminase and portal protein were most closely related to *Stenotrophomonas* phage S1 (S3, S4 Figs.), a temperate siphovirus isolated from sewage [100].

They also clustered together with the putative temperate siphoviruses *Synechococcus* S-CBS1 and S-CBS3 (terminase) [98], as well as several temperate myoviruses, like *Acidithiobacillus* phage AcaML (terminase and portal) [101], *Halomonas* phage phiHAP-1 (portal) [102], and *Vibrio* phage VP882 (portal) [103]. Again, these single marker gene based findings are inconsistent; while some are congruent with the morphological observations, some are not.

Together, these results from three phage gene markers suggest the rampant mosaicism posited for siphoviruses [104] may also be true in marine siphoviruses since it has been detected not only in phage B8b but also in other marine siphoviruses [49, 89, 98]. In contrast, other phage groups (e.g., T4-like myoviruses) appear to have clear signals of vertical descent, particularly in their core gene sets as observed in isolates [105, 106] and large-scale analyses of field populations [107].

Distinctive genes in *Pseudoalteromonas* phage B8b

The B8b genome encoded a RecT protein (Contig1_ORF15), which is involved in homologous recombination of importance to a variety of cellular processes, including the maintenance of genomic integrity [108]. It provides means for repair of DNA double-stranded breaks, which can arise during DNA replication as well as after damage by external factors such as irradiation [109]. As a ssDNA-binding protein, RecT promotes ssDNA annealing, strand transfer, and strand invasion *in vitro* [110]. In *Escherichia coli*, homologous recombination is mediated by bacteriophage RecT protein that permits efficient DNA engineering in various *E. coli* hosts [111]. Although integrase or excisionase genes were not identified in our genome, the RecT gene encoded might facilitate the integration of the phage B8b genome into the bacterial hosts genome, opening up for the potential of phage B8b to act as a prophage.

The presence of chaperone GroES (also called chaperonin 10; Contig2_ORF19) in B8b is unique as it is the first time GroES been reported in a siphovirus, while it has previously been detected in myoviruses and podoviruses [13]. Chaperonins are known to promote the correct folding of newly synthesized polypeptides and to prevent aggregation of proteins denatured under stress [112]. In *E. coli*, the genes that encode for GroES/GroEL chaperonin system were first identified as host factors required for bacteriophage morphogenesis and subsequent work established that the GroES and GroEL proteins were essential for the correct assembly of λ proheads and T5 tails [113, 114]. The presence of this gene in phage B8b might point out that possibly could have a more complex viral capsid or tail structure than other siphoviruses, which requires that it provides its own chaperonin.

Possibility of lysogenic replication strategy

Phage B8b was isolated as a lytic phage and its lytic nature was confirmed by the one-step growth curve (Fig. 2). However, from our phylogenetic analyses and the presence of the RecT protein, phage B8b was closely related to several phages that are known to be able to perform lysogeny. Also, a large number of phage B8b's structural proteins had their closest blast hits to proteins from the *Marinobacterium stanieri* S30 microbial genome (see Table 1), which begged its comparison (Fig. 4). The synteny between phage B8b and this bacterial contig suggests that a prophage is present in this microbial genome, although it could be a relic or defective prophage, which would represent the closest available genome representative to phage B8b. This highlights the possibility that B8b could be a temperate phage and also, it is possible that lysogenic replication of phage B8b might be detected if different host strains are infected [61], other growth conditions, which might promote lysogeny, are used [115], or under changed phage-host density ratios [116, 117]. Lysogeny would be an attractive lifestyle in oligotrophic marine environment, such as the NW Mediterranean Sea source waters, as lysogeny is a

survival strategy during conditions of low host cell encounter rates [118–120]. Moreover, the presence of a prophage may be advantageous for the bacterial host. Hommoimmunity protects lysogens from infection by closely related phages [121] and it has been also proposed that marine prophages may contribute to host survival in unfavorable environments through the suppression of unnecessary metabolic activities [122].

Marine Gammaproteobacteria host genes

Given that cyanophage genomes commonly contain “host genes” (e.g., [10, 63, 123] and recent metagenomic findings that such viral-encoded host genes cover broad metabolic categories [124] including nearly all of central carbon metabolism [24], we wondered whether such Auxiliary Metabolic Genes (AMGs, *sensu* [125]) existed in this new phage B8b genome. Of the 58 phage B8b’s ORFs, 10 were bacterial and 8 prophage related, and all eight ORFs were related to Alteromonadales (Gammaproteobacteria). In fact, *Alteromonas* sp. MED111 was the only non *Pseudoalteromonas* strain that could be infected by phage B8b in the host-range assay. If phages can act as vectors to genetically transfer DNA across bacterial taxa through lateral gene transfer (LGT) [85] one would expect to find host genes within phages that infect similar hosts. Lateral gene transfer has been previously observed in cyanophages [10, 126] and *Pseudoalteromonas* phages [49]. Genetic interaction of phage and bacterial genomes has been predicted to be highly specific such in co-evolutionary models [127] although it is well known that phages can infect hosts from different species and even genera [79]. Emerging phage-bacteria interactions are now being viewed as networks rather than coupled simplistic interactions [128]. The genus-crossing host range detected in phage B8b and the fact that many of the genes found in our B8 genomes were related to a prophage, from a different host specifically to the genus *Marinobacter* spp. within Gammaproteobacteria stressing that possibility of genetic exchange between different host genera.

Relative abundance of phage B8b in Pacific Ocean Viral metagenomes

Given the recent availability of a large-scale viral metagenomic dataset (32 Pacific Ocean Viriomes, [26]) that was consistently prepared using extensively well-documented quantitative methods [31–36], we wondered whether this relatively novel phage B8b genome was observed in other marine systems and if so how abundant it was. The normalized relative abundance showed that phage B8b was mainly present in the surface, coastal waters with 1.15% assigned reads to phage B8b (Fig. 5). However, an average of 0.46% of the metagenomic reads from deeper, aphotic samples were also recruited to these genomes, which might reflect that a similar host are consistently present through the entire water column since this phage was isolated from surface waters in NW Mediterranean Sea. For environmental phages, these numbers are low when compared to phages for abundant hosts. For example, phages for SAR11, *Synechococcus* and *Prochlorococcus* represented closer to 58.7%, 21.6% and 12.4%, respectively, in diverse ocean viral metagenomes [43]. However, these *Pseudoalteromonas* B8b phage abundances are similar to environmental phages for less abundant hosts—e.g., *Cellulophaga* phages—considered to be representatives of the ‘rare virosphere’ [13]. The percentage of the genome covered by the metagenomics reads in POV database was on average 24.2%, although only 0.65% was exclusive to phage B8b. This suggests that many phage B8b ORFs are likely conserved across a diversity of phages (Fig. 5). Consistent with this hypothesis, the amino acid percentage identity of the predicted proteins for phage B8b genes (24.2%) were similar to that observed for non-marine T4-like phages (29%), but contrasted the identity for pelagiphages (81.4%). Such identities aid in discriminating between whether a new reference genome is itself being observed or is instead the best recruit for reads that likely derive from a more divergent

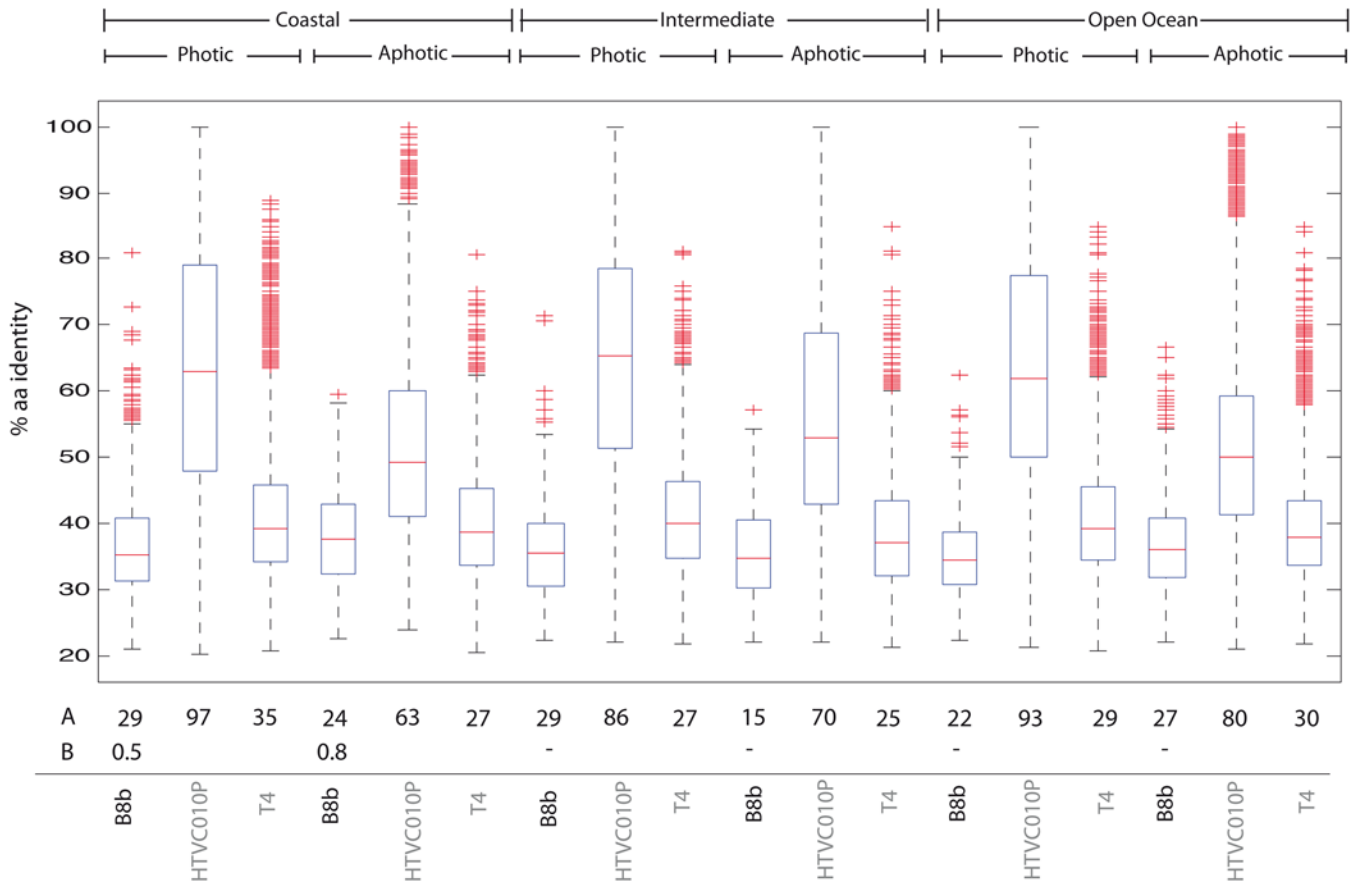


Figure 5. Box plots show the percent amino acid (aa) identity for metagenomics reads (32 metagenomes, POV) recruiting to predicted genes from *Pseudoalteromonas* phage B8b as well as the abundant Pelagiphage HTVC010P (GenBank No/ KC465898) and the non-marine Enterobacteriophage T4 (GenBank No. NC_000866). Metagenomes were grouped in 6 categories product of the combination of photic zone and site location as appear in Hurwitz and Sullivan [25]. A) Percentage of the genome that is being covered by the metagenomics reads. B) Percentage of reads that better align to ORFs in the indicated genome (as per bitscore comparison) than the rest of NR. In box plots boxes mark the upper and lower quartile with the median shown in red, whiskers are extended to 1.5 times the interquartile range, finally, red crosses show outliers.

doi:10.1371/journal.pone.0114829.g005

group of phages (see Fig. 5 in [13]). Together we interpret these findings to suggest that this phage is ubiquitous phage in surface, coastal marine waters, but likely another member of the ‘rare virosphere’.

Conclusions

The *Pseudoalteromonas* phage B8b genome adds a new siphovirus genome for marine Gamma-proteobacteria phages. This phage shares many features with available marine siphoviruses and likely represents another member of a ubiquitous class of phages in the ‘rare virosphere’. Its cross-genera host range revealed infection across the genus level and hints of its genome structure suggest that phage B8b may have also a lysogenic lifestyle. Future experimental tests based on phageFISH [129] may allow us to dig into the temperate phage biology within this novel model system.

Supporting Information

S1 Fig. Genome size of phage B8b analyzed by Pulse Field Gel Electrophoresis (PFGE). (TIF)

S2 Fig. Phylogenetic relationships of the DNA polymerase across diverse bacteriophages. In green are represented the *Myoviridae* phages, in black the *Siphoviridae* and in blue the *Podoviridae*. Phage B8b is represented in red.

(TIF)

S3 Fig. Phylogenetic relationships of the phage large terminase across diverse bacteriophages. In green are represented the *Myoviridae* phages, in black the *Siphoviridae* and in blue the *Podoviridae*. Phage B8b is represented in red.

(TIF)

S4 Fig. Phylogenetic relationships of the phage portal protein across diverse bacteriophages. In green are represented the *Myoviridae* phages, in black the *Siphoviridae* and in blue the *Podoviridae*. Phage B8b is represented in red.

(TIF)

S1 Table. Bacterial hosts used to test the *Pseudoalteromonas* phage B8b phage host range. Bacterial strain from the phage was isolated is labeled in black. Bacterial strains infected by B8b siphovirus are labeled in red.

(DOCX)

S2 Table. Set of designed primers used in the PCR and direct sequencing in order to close the phage B8b genome.

(DOCX)

S3 Table. Phage DNA polymerase gene sequences used for phylogenetic analysis.

(DOCX)

S4 Table. Phage large terminase gene sequences used for phylogenetic analysis.

(DOCX)

S5 Table. Portal protein gene sequences used for phylogenetic analysis.

(DOCX)

Acknowledgments

We thank Bonnie Poulos, Cristina Howard and the Tucson Marine Phage Lab for support during E.Lara stay in Tucson, Arizona. We also thank Daniel J. Nasko for his help in genome assembly. EL was a recipient of the FPI-predoc fellowship from the Spanish Ministry of Science and Innovation (MICINN). SGA was supported by a Ramon y Cajal contract from MICINN and by MicroB3 (FP7-OCEAN-2011). KH was supported by a postdoctoral fellowship from the Swedish Research Council (623–2010–6548). This work was supported by grants MICROVIS (CTM2007–62140) and MEFISTO (CTM2013–43767-P) to DV, from the MICINN and MINECO, MICRODIVERSITY (CGL2008–00762/BOS) and PANGENOMICS (CGL2011–26848/BOS) to SGA from the MICINN, and a Gordon and Betty Moore Foundation (grant #2631) to MBS.

Author Contributions

Conceived and designed the experiments: EL KH NS ELS MBS SGA. Performed the experiments: EL ELS KH. Analyzed the data: EL KH NS JCIE FMCC NCV. Contributed reagents/materials/analysis tools: DV MBS SGA. Wrote the paper: EL KH NS ELS FMCC DV MBS SGA.

References

1. Danovaro R, Corinaldesi C, Dell'Anno A, Fuhrman JA, Middelburg JJ, et al. (2011) Marine viruses and global climate change. *FEMS Microbiol Rev* 35: 993–1034. doi: [10.1111/j.1574-6976.2010.00258.x](https://doi.org/10.1111/j.1574-6976.2010.00258.x) PMID: [21204862](https://pubmed.ncbi.nlm.nih.gov/21204862/)
2. Fuhrman JA (1999) Marine viruses and their biogeochemical and ecological effects. *Nature* 399: 541–548. doi: [10.1038/21119](https://doi.org/10.1038/21119) PMID: [10376593](https://pubmed.ncbi.nlm.nih.gov/10376593/)
3. Suttle CA (2007) Marine viruses—major players in the global ecosystem. *Nat Rev Microbiol* 5: 801–812. doi: [10.1038/nrmicro1750](https://doi.org/10.1038/nrmicro1750) PMID: [17853907](https://pubmed.ncbi.nlm.nih.gov/17853907/)
4. Suttle CA (2005) Viruses in the sea. *Nature* 437: 356–361. doi: [10.1038/nature04160](https://doi.org/10.1038/nature04160) PMID: [16163346](https://pubmed.ncbi.nlm.nih.gov/16163346/)
5. Brussaard CPD, Wilhelm SW, Thingstad F, Weinbauer MG, Bratbak G, et al. (2008) Global-scale processes with a nanoscale drive: the role of marine viruses. *ISME J* 2: 575–578. doi: [10.1038/ismej.2008.31](https://doi.org/10.1038/ismej.2008.31) PMID: [18385772](https://pubmed.ncbi.nlm.nih.gov/18385772/)
6. Breitbart M (2012) Marine Viruses: Truth or Dare. *Ann Rev Mar Sci* 4: 425–448. doi: [10.1146/annurev-marine-120709-142805](https://doi.org/10.1146/annurev-marine-120709-142805) PMID: [22457982](https://pubmed.ncbi.nlm.nih.gov/22457982/)
7. Wommack KE, Colwell RR (2000) Virioplankton: Viruses in aquatic ecosystems. *Microbiol Mol Biol Rev* 64: 69–114. doi: [10.1128/MMBR.64.1.69-114.2000](https://doi.org/10.1128/MMBR.64.1.69-114.2000)
8. Weinbauer MG (2004) Ecology of prokaryotic viruses. *FEMS Microbiol Rev* 28: 127–181. doi: [10.1016/j.femsre.2003.08.001](https://doi.org/10.1016/j.femsre.2003.08.001) PMID: [15109783](https://pubmed.ncbi.nlm.nih.gov/15109783/)
9. Rohwer F, Thurber RV (2009) Viruses manipulate the marine environment. *Nature* 459: 207–212. doi: [10.1038/nature08060](https://doi.org/10.1038/nature08060) PMID: [19444207](https://pubmed.ncbi.nlm.nih.gov/19444207/)
10. Sullivan MB, Lindell D, Lee JA, Thompson LR, Bielawski JP, et al. (2006) Prevalence and evolution of core photosystem II genes in marine cyanobacterial viruses and their hosts. *PLoS Biol* 4: 1344–1357. doi: [10.1371/journal.pbio.0040234](https://doi.org/10.1371/journal.pbio.0040234)
11. Edwards RA, Rohwer F (2005) Viral metagenomics. *Nat Rev Microbiol* 3: 504–510. doi: [10.1038/nrmicro1163](https://doi.org/10.1038/nrmicro1163) PMID: [15886693](https://pubmed.ncbi.nlm.nih.gov/15886693/)
12. Rappé MS, Giovannoni SJ (2003) The uncultured microbial majority. *Ann Rev Microbiol* 57: 369–394. doi: [10.1146/annurev.micro.57.030502.090759](https://doi.org/10.1146/annurev.micro.57.030502.090759)
13. Holmfeldt K, Solonenko N, Shah M, Corrier K, Riemann L, et al. (2013) Twelve previously unknown phage genera are ubiquitous in global oceans. *Proc Nat Acad Sci* 110: 12798–12803. doi: [10.1073/pnas.1305956110](https://doi.org/10.1073/pnas.1305956110) PMID: [23858439](https://pubmed.ncbi.nlm.nih.gov/23858439/)
14. Seguritan V, Feng IW, Rohwer F, Swift M, Segall AM (2003) Genome sequences of two closely related *Vibrio parahaemolyticus* phages, VP16T and VP16C. *J Bacteriol* 185: 6434–6447. doi: [10.1128/JB.185.21.6434-6447.2003](https://doi.org/10.1128/JB.185.21.6434-6447.2003) PMID: [14563879](https://pubmed.ncbi.nlm.nih.gov/14563879/)
15. Steward GF (2001) Fingerprinting viral assemblages by pulsed field gel electrophoresis (PFGE). *Method Microbiol* 30: 85–103. doi: [10.1016/S0580-9517\(01\)30041-7](https://doi.org/10.1016/S0580-9517(01)30041-7)
16. Steward GF, Montiel JL, Azam F (2000) Genome size distributions indicate variability and similarities among marine viral assemblages from diverse environments. *Limnol Oceanogr* 45: 1697–1706. doi: [10.4319/lo.2000.45.8.1697](https://doi.org/10.4319/lo.2000.45.8.1697)
17. Winget DM, Wommack KE (2008) Randomly amplified polymorphic DNA PCR as a tool for assessment of marine viral richness. *Appl Environ Microbiol* 74: 2612–2618. doi: [10.1128/AEM.02829-07](https://doi.org/10.1128/AEM.02829-07) PMID: [18344351](https://pubmed.ncbi.nlm.nih.gov/18344351/)
18. Comeau AM, Short S, Suttle CA (2004) The use of degenerate-primed random amplification of polymorphic DNA (DP-RAPD) for strain-typing and inferring the genetic similarity among closely related viruses. *J Virol Methods* 118: 95–100. doi: [10.1016/j.jviromet.2004.01.020](https://doi.org/10.1016/j.jviromet.2004.01.020) PMID: [15081604](https://pubmed.ncbi.nlm.nih.gov/15081604/)
19. Comeau AM, Chan AM, Suttle CA (2006) Genetic richness of vibriophages isolated in a coastal environment. *Environ Microbiol* 8: 1164–1176. doi: [10.1111/j.1462-2920.2006.01006.x](https://doi.org/10.1111/j.1462-2920.2006.01006.x) PMID: [16817925](https://pubmed.ncbi.nlm.nih.gov/16817925/)
20. Angly FE, Felts B, Breitbart M, Salamon P, Edwards RA, et al. (2006) The marine viromes of four oceanic regions. *PLoS Biol* 4: 2121–2131. doi: [10.1371/journal.pbio.0040368](https://doi.org/10.1371/journal.pbio.0040368)
21. Breitbart M, Salamon P, Andresen B, Mahaffy JM, Segall AM, et al. (2002) Genomic analysis of uncultured marine viral communities. *Proc Nat Acad Sci* 99: 14250–14255. doi: [10.1073/pnas.202488399](https://doi.org/10.1073/pnas.202488399) PMID: [12384570](https://pubmed.ncbi.nlm.nih.gov/12384570/)
22. Rohwer F (2003) Global phage diversity. *Cell* 113: 141–141. doi: [10.1016/S0092-8674\(03\)00276-9](https://doi.org/10.1016/S0092-8674(03)00276-9) PMID: [12705861](https://pubmed.ncbi.nlm.nih.gov/12705861/)
23. Rodriguez-Brito B, Li LL, Wegley L, Furlan M, Angly F, et al. (2010) Viral and microbial community dynamics in four aquatic environments. *ISME J* 4: 739–751. doi: [10.1038/ismej.2010.1](https://doi.org/10.1038/ismej.2010.1) PMID: [20147985](https://pubmed.ncbi.nlm.nih.gov/20147985/)

24. Hurwitz B, Hallam S, Sullivan MB (2013) Metabolic reprogramming by viruses in the sunlit and dark ocean. *Genome Biol* 14: R123. doi: [10.1186/gb-2013-14-11-r123](https://doi.org/10.1186/gb-2013-14-11-r123) PMID: [24200126](https://pubmed.ncbi.nlm.nih.gov/24200126/)
25. Hurwitz BL, Brum JR, Sullivan MB (2014) Depth-stratified functional and taxonomic niche specialization in the 'core' and 'flexible' Pacific Ocean Virome. *ISME J*. doi: [10.1038/ismej.2014.143](https://doi.org/10.1038/ismej.2014.143) PMID: [25093636](https://pubmed.ncbi.nlm.nih.gov/25093636/)
26. Hurwitz BL, Sullivan MB (2013) The Pacific Ocean Virome (POV): A marine viral metagenomic dataset and associated protein clusters for quantitative viral ecology. *PLoS One* 8(2):e57355. doi: [10.1371/journal.pone.0057355](https://doi.org/10.1371/journal.pone.0057355) PMID: [23468974](https://pubmed.ncbi.nlm.nih.gov/23468974/)
27. Hurwitz BL, Westveld AH, Brum JR, Sullivan MB (2014) Modeling ecological drivers in marine viral communities using comparative metagenomics and network analyses. *Proc Nat Acad Sci* 111: 10714–10719. doi: [10.1073/pnas.1319778111](https://doi.org/10.1073/pnas.1319778111) PMID: [25002514](https://pubmed.ncbi.nlm.nih.gov/25002514/)
28. Roux S, Hawley AK, Torres Beltran M, Scofield M, Schwientek P, et al. (2014) Ecology and evolution of viruses infecting uncultivated SUP05 bacteria as revealed by single-cell- and meta- genomics. *eLife*. doi: [10.7554/eLife.03125](https://doi.org/10.7554/eLife.03125) PMID: [25171894](https://pubmed.ncbi.nlm.nih.gov/25171894/)
29. Williamson SJ, Rusch DB, Yooseph S, Halpern AL, Heidelberg KB, et al. (2008) The Sorcerer II global ocean sampling expedition: Metagenomic characterization of viruses within aquatic microbial samples. *PLoS One* 3: e1456. doi: [10.1371/journal.pone.0001456](https://doi.org/10.1371/journal.pone.0001456) PMID: [18213365](https://pubmed.ncbi.nlm.nih.gov/18213365/)
30. Dinsdale EA, Edwards RA, Hall D, Angly F, Breitbart M, et al. (2008) Functional metagenomic profiling of nine biomes. *Nature* 452: 629–632. doi: [10.1038/nature06810](https://doi.org/10.1038/nature06810) PMID: [18337718](https://pubmed.ncbi.nlm.nih.gov/18337718/)
31. Duhaime MB, Deng L, Poulos BT, Sullivan MB (2012) Towards quantitative metagenomics of wild viruses and other ultra-low concentration DNA samples: a rigorous assessment and optimization of the linker amplification method. *Environ Microbiol* 14: 2526–2537. doi: [10.1111/j.1462-2920.2012.02791.x](https://doi.org/10.1111/j.1462-2920.2012.02791.x)
32. Duhaime MB, Sullivan MB (2012) Ocean viruses: rigorously evaluating the metagenomic sample-to-sequence pipeline. *Virology* 434: 181–186. doi: [10.1016/j.virol.2012.09.036](https://doi.org/10.1016/j.virol.2012.09.036) PMID: [23084423](https://pubmed.ncbi.nlm.nih.gov/23084423/)
33. John S, Mendez C, Deng L, Poulos B, Kauffman A, et al. (2011) A simple and efficient method for concentration of ocean viruses by chemical flocculation. *Environ Microbiol Rep* 3: 195–202. doi: [10.1111/j.1758-2229.2010.00208.x](https://doi.org/10.1111/j.1758-2229.2010.00208.x) PMID: [21572525](https://pubmed.ncbi.nlm.nih.gov/21572525/)
34. Solonenko SA, Ignacio-Espinoza JC, Alberti A, Cruaud C, Hallam S, et al. (2013) Sequencing platform and library preparation choices impact viral metagenomes. *BMC Genomics* 14: 320. doi: [10.1186/1471-2164-14-320](https://doi.org/10.1186/1471-2164-14-320) PMID: [23663384](https://pubmed.ncbi.nlm.nih.gov/23663384/)
35. Solonenko SA, Sullivan MB (2013) Preparation of metagenomic libraries from naturally occurring marine viruses. *Method Enzymol. Microbial Metagenomics, Metatranscriptomics and Metaproteomics* edition 531: 143–165. doi: [10.1016/B978-0-12-407863-5.00008-3](https://doi.org/10.1016/B978-0-12-407863-5.00008-3)
36. Hurwitz BL, Deng L, Poulos BT, Sullivan MB (2013) Evaluation of methods to concentrate and purify ocean virus communities through comparative, replicated metagenomics. *Environ Microbiol* 15: 1428–1440. doi: [10.1111/j.1462-2920.2012.02836.x](https://doi.org/10.1111/j.1462-2920.2012.02836.x) PMID: [22845467](https://pubmed.ncbi.nlm.nih.gov/22845467/)
37. Brum JR, Schenck RO, Sullivan MB (2013) Global morphological analysis of marine viruses shows minimal regional variation and dominance of non-tailed viruses. *ISME J* 7: 1738–1751. doi: [10.1038/ismej.2013.67](https://doi.org/10.1038/ismej.2013.67) PMID: [23635867](https://pubmed.ncbi.nlm.nih.gov/23635867/)
38. Steward GF, Culley AI, Mueller JA, Wood-Charlson EM, Belcaid M, et al. (2013) Are we missing half of the viruses in the ocean? *ISME J* 7: 672–679. doi: [10.1038/ismej.2012.121](https://doi.org/10.1038/ismej.2012.121) PMID: [23151645](https://pubmed.ncbi.nlm.nih.gov/23151645/)
39. Labonté JM, Suttle CA (2013) Previously unknown and highly divergent ssDNA viruses populate the oceans. *ISME J* 7: 2169–2177. doi: [10.1038/ismej.2013.110](https://doi.org/10.1038/ismej.2013.110) PMID: [23842650](https://pubmed.ncbi.nlm.nih.gov/23842650/)
40. Hingamp P, Grimsley N, Acinas SG, Clerissi C, Subirana L, et al. (2013) Exploring nucleo-cytoplasmic large DNA viruses in Tara Oceans microbial metagenomes. *The ISME J* 7: 1678–1695. doi: [10.1038/ismej.2013.59](https://doi.org/10.1038/ismej.2013.59)
41. Hopkins M, Kailasan S, Cohen A, Roux S, Tucker KP, et al. (2014) Diversity of environmental single-stranded DNA phages revealed by PCR amplification of the partial major capsid protein. *ISME J* 8: 2093–2103. doi: [10.1038/ismej.2014.43](https://doi.org/10.1038/ismej.2014.43) PMID: [24694711](https://pubmed.ncbi.nlm.nih.gov/24694711/)
42. Paul JH, Sullivan MB (2005) Marine phage genomics: what have we learned? *Curr Opin Biotech* 16: 299–307. doi: [10.1016/j.copbio.2005.03.007](https://doi.org/10.1016/j.copbio.2005.03.007) PMID: [15961031](https://pubmed.ncbi.nlm.nih.gov/15961031/)
43. Zhao YL, Temperton B, Thrash JC, Schwalbach MS, Vergin KL, et al. (2013) Abundant SAR11 viruses in the ocean. *Nature* 494: 357–360. doi: [10.1038/nature11921](https://doi.org/10.1038/nature11921) PMID: [23407494](https://pubmed.ncbi.nlm.nih.gov/23407494/)
44. Kang I, Oh H-M, Kang D, Cho J-C (2013) Genome of a SAR116 bacteriophage shows the prevalence of this phage type in the oceans. *Proc Nat Acad Sci* 110: 12343–12348. doi: [10.1073/pnas.1219930110](https://doi.org/10.1073/pnas.1219930110) PMID: [23798439](https://pubmed.ncbi.nlm.nih.gov/23798439/)

45. Ruiz-González C, Galí M, Lefort T, Cardelús C, Simó R, et al. (2012) Annual variability in light modulation of bacterial heterotrophic activity in surface northwestern Mediterranean waters. *Limnol Oceanogr* 57: 1376–1388. doi: [10.4319/lo.2012.57.5.1376](https://doi.org/10.4319/lo.2012.57.5.1376)
46. Ferrera I, Gasol JM, Sebastián M, Hojerová E, Koblizek M (2011) Comparison of growth rates of Aerobic Anoxygenic Phototrophic bacteria and other bacterioplankton groups in coastal Mediterranean waters. *Appl Environ Microbiol* 77: 7451–7458. doi: [10.1128/AEM.00208-11](https://doi.org/10.1128/AEM.00208-11) PMID: [21724878](https://pubmed.ncbi.nlm.nih.gov/21724878/)
47. Crespo BG, Pommier T, Fernández-Gómez B, Pedrós-Alió C (2013) Taxonomic composition of the particle-attached and free-living bacterial assemblages in the Northwest Mediterranean Sea analyzed by pyrosequencing of the 16S rRNA. *MicrobiologyOpen* 2: 541–552. doi: [10.1002/mbo3.92](https://doi.org/10.1002/mbo3.92) PMID: [23723056](https://pubmed.ncbi.nlm.nih.gov/23723056/)
48. Moebus K (1992) Further investigations on the concentration of marine bacteriophages in the water around Helgoland, with reference to the phage-host systems encountered. *Helgoländer Meeresunters.* 46: 275–292. doi: [10.1007/BF02367099](https://doi.org/10.1007/BF02367099)
49. Duhaime MB, Wichels A, Waldmann J, Teeling H, Glockner FO (2011) Ecogenomics and genome landscapes of marine *Pseudoalteromonas* phage H105/1. *ISME J* 5: 107–121. doi: [10.1038/ismej.2010.94](https://doi.org/10.1038/ismej.2010.94) PMID: [20613791](https://pubmed.ncbi.nlm.nih.gov/20613791/)
50. Wichels A, Biel SS, Gelderblom HR, Brinkhoff T, Muyzer G, et al. (1998) Bacteriophage diversity in the North Sea. *Appl Environ Microbiol* 64: 4128–4133. PMID: [9797256](https://pubmed.ncbi.nlm.nih.gov/9797256/)
51. Wichels A, Gerdt G, Schutt C (2002) *Pseudoalteromonas* spp. phages, a significant group of marine bacteriophages in the North Sea. *Aquat Microb Ecol* 27: 233–239. doi: [10.3354/ame027233](https://doi.org/10.3354/ame027233)
52. Thomas T, Evans FF, Schleheck D, Mai-Prochnow A, Burke C, et al. (2008) Analysis of the *Pseudoalteromonas tunicata* Genome Reveals Properties of a Surface-Associated Life Style in the Marine Environment. *PLoS One* 3: e3252. doi: [10.1371/journal.pone.0003252](https://doi.org/10.1371/journal.pone.0003252) PMID: [18813346](https://pubmed.ncbi.nlm.nih.gov/18813346/)
53. Xie BB, Shu YL, Qin QL, Rong JC, Zhang XY, et al. (2012) Genome Sequences of Type Strains of Seven Species of the Marine Bacterium *Pseudoalteromonas*. *J Bacteriol* 194: 2746–2747. doi: [10.1128/JB.00265-12](https://doi.org/10.1128/JB.00265-12) PMID: [22535931](https://pubmed.ncbi.nlm.nih.gov/22535931/)
54. Männistö RH, Kivelä HM, Paulin L, Bamford DH, Bamford JKH (1999) The complete genome sequence of PM2, the first lipid-containing bacterial virus to be isolated. *Virology* 262: 355–363. doi: [10.1006/viro.1999.9837](https://doi.org/10.1006/viro.1999.9837) PMID: [10502514](https://pubmed.ncbi.nlm.nih.gov/10502514/)
55. Hardies SC, Hwang YJ, Hwang YC, Jang GI, Cho BC (2013) Morphology, Physiological Characteristics and Complete Sequence of Marine Bacteriophage φRIO-1 Infecting *Pseudoalteromonas marina*. *J Virol* 87: 9189–9198. doi: [10.1128/JVI.01521-13](https://doi.org/10.1128/JVI.01521-13) PMID: [23760254](https://pubmed.ncbi.nlm.nih.gov/23760254/)
56. Sambrook J, Fritsch EF, Maniatis T (1989) *Molecular Cloning: A Laboratory Manual*. 2nd ed, Vol 1. Cold Spring Harbor, NY, USA: Cold Spring Harbor Laboratory.
57. Sambrook J, Russell DW (2000) *Molecular Cloning: A Laboratory Manual*. Cold Spring Harbor, NY, USA: Cold Spring Harbor Laboratory.
58. Abramoff MD, Magalhaes PJ, Ram SJ (2004) Image processing with ImageJ. *Biophotonics Int* 11: 36–42.
59. Weiss BD, Capage MA, Kessel M, Benson SA (1994) Isolation and characterization of a generalized transducing phage for *Xanthomonas campestris* pv. *campestris*. *J Bacteriol* 176: 3354–3359.
60. Gasol JM, Del Giorgio PA (2000) Using flow cytometry for counting natural planktonic bacteria and understanding the structure of planktonic bacterial communities. *Sci Mar* 64: 197–224.
61. Holmfeldt K, Howard-Varona C, Solonenko N, Sullivan MB (2014) Contrasting genomic patterns and infection strategies of two co-existing *Bacteroidetes* podovirus genera. *Environ Microbiol* 16:2501–2513. doi: [10.1111/1462-2920.12391](https://doi.org/10.1111/1462-2920.12391) PMID: [24428166](https://pubmed.ncbi.nlm.nih.gov/24428166/)
62. Henn MR, Sullivan MB, Stange-Thomann N, Osburne MS, Berlin AM, et al. (2010) Analysis of High-Throughput Sequencing and Annotation Strategies for Phage Genomes. *PLoS One* 5: e9083. doi: [10.1371/journal.pone.0009083](https://doi.org/10.1371/journal.pone.0009083) PMID: [20140207](https://pubmed.ncbi.nlm.nih.gov/20140207/)
63. Sullivan MB, Huang KH, Ignacio-Espinoza JC, Berlin AM, Kelly L, et al. (2010) Genomic analysis of oceanic cyanobacterial myoviruses compared with T4-like myoviruses from diverse hosts and environments. *Environ Microbiol* 12: 3035–3056. doi: [10.1111/j.1462-2920.2010.02280.x](https://doi.org/10.1111/j.1462-2920.2010.02280.x) PMID: [20662890](https://pubmed.ncbi.nlm.nih.gov/20662890/)
64. Clarke KR (1993) Non-parametric multivariate analyses of changes in community structure. *Aust J Ecol* 18: 117–143. doi: [10.1111/j.1442-9993.1993.tb00438.x](https://doi.org/10.1111/j.1442-9993.1993.tb00438.x)
65. Besemer J, Borodovsky M (1999) Heuristic approach to deriving models for gene finding. *Nucleic Acids Res* 27: 3911–3920. doi: [10.1093/nar/27.19.3911](https://doi.org/10.1093/nar/27.19.3911) PMID: [10481031](https://pubmed.ncbi.nlm.nih.gov/10481031/)
66. Wisniewski JR, Zougman A, Mann M (2009) Combination of FASP and StageTip-based fractionation allows in-depth analysis of the hippocampal membrane proteome. *J Proteome Res* 8: 5674–5678. doi: [10.1021/pr900748n](https://doi.org/10.1021/pr900748n) PMID: [19848406](https://pubmed.ncbi.nlm.nih.gov/19848406/)

67. Verberkmoes NC, Russell AL, Shah M, Godzik A, Rosenquist M, et al. (2008) Shotgun metaproteomics of the human distal gut microbiota. *ISME J* 3: 179–189. doi: [10.1038/ismej.2008.108](https://doi.org/10.1038/ismej.2008.108) PMID: [18971961](https://pubmed.ncbi.nlm.nih.gov/18971961/)
68. Erickson AR, Cantarel BL, Lamendella R, Darzi Y, Mongodin EF, et al. (2012) Integrated Metagenomics/Metaproteomics Reveals Human Host-Microbiota Signatures of Crohn's Disease. *PLoS ONE* 7: e49138. doi: [10.1371/journal.pone.0049138](https://doi.org/10.1371/journal.pone.0049138) PMID: [23209564](https://pubmed.ncbi.nlm.nih.gov/23209564/)
69. Larkin MA, Blackshields G, Brown NP, Chenna R, McGettigan PA, et al. (2007) Clustal W and Clustal X version 2.0. *Bioinformatics* 23: 2947–2948. doi: [10.1093/bioinformatics/btm404](https://doi.org/10.1093/bioinformatics/btm404) PMID: [17846036](https://pubmed.ncbi.nlm.nih.gov/17846036/)
70. Jones DT, Taylor WR, Thornton JM (1992) The rapid generation of mutation data matrices from protein sequences. *Comput Appl Biosci* 8: 275–282. PMID: [1633570](https://pubmed.ncbi.nlm.nih.gov/1633570/)
71. Tamura K, Peterson D, Peterson N, Stecher G, Nei M, et al. (2011) MEGA5: Molecular Evolutionary Genetics Analysis Using Maximum Likelihood, Evolutionary Distance, and Maximum Parsimony Methods. *Mol Biol Evol* 28: 2731–2739. doi: [10.1093/molbev/msr121](https://doi.org/10.1093/molbev/msr121) PMID: [21546353](https://pubmed.ncbi.nlm.nih.gov/21546353/)
72. Raes J, Korb J, Lercher MJ, von Mering C, Bork P (2007) Prediction of effective genome size in metagenomic samples. *Genome Biol* 8: R10. doi: [10.1186/gb-2007-8-1-r10](https://doi.org/10.1186/gb-2007-8-1-r10) PMID: [17224063](https://pubmed.ncbi.nlm.nih.gov/17224063/)
73. Van Regenmortel MH, Mayo MA, Fauquet CM, Maniloff J (2000) Virus nomenclature: consensus versus chaos. *Arch Virol* 145: 2227–2232. doi: [10.1007/s007050070053](https://doi.org/10.1007/s007050070053) PMID: [11087105](https://pubmed.ncbi.nlm.nih.gov/11087105/)
74. Kivelä HM, Männistö RH, Kalkinen N, Bamford DH (1999) Purification and protein composition of PM2, the first lipid-containing bacterial virus to be isolated. *Virology* 262: 364–374. doi: [10.1006/viro.1999.9838](https://doi.org/10.1006/viro.1999.9838) PMID: [10502515](https://pubmed.ncbi.nlm.nih.gov/10502515/)
75. Baudoux AC, Hendrix RW, Lander GC, Bailly X, Podell S, et al. (2012) Genomic and functional analysis of *Vibrio* phage SIO-2 reveals novel insights into ecology and evolution of marine siphoviruses. *Environ Microbiol* 14: 2071–2086. doi: [10.1111/j.1462-2920.2011.02685.x](https://doi.org/10.1111/j.1462-2920.2011.02685.x) PMID: [22225728](https://pubmed.ncbi.nlm.nih.gov/22225728/)
76. Suttle CA, Chan AM (1993) Marine cyanophages infecting oceanic and coastal strains of *Synechococcus* abundance, morphology, cross-infectivity and growth-characteristics. *Mar Ecol Prog Ser* 92: 99–109. doi: [10.3354/meps092099](https://doi.org/10.3354/meps092099)
77. Hadas H, Einav M, Fishov I, Zaritsky A (1997) Bacteriophage T4 development depends on the physiology of its host *Escherichia coli*. *Microbiology* 143: 179–185. doi: [10.1099/00221287-143-1-179](https://doi.org/10.1099/00221287-143-1-179) PMID: [9025292](https://pubmed.ncbi.nlm.nih.gov/9025292/)
78. Jensen EC, Schrader HS, Rieland B, Thompson TL, Lee KW, et al. (1998) Prevalence of broad-host-range lytic bacteriophages of *Sphaerotilus natans*, *Escherichia coli*, and *Pseudomonas aeruginosa*. *Appl Environ Microbiol* 64: 575–580. PMID: [9464396](https://pubmed.ncbi.nlm.nih.gov/9464396/)
79. Sullivan MB, Waterbury JB, Chisholm SW (2003) Cyanophages infecting the oceanic cyanobacterium *Prochlorococcus*. *Nature* 424: 1047–1051. doi: [10.1038/nature01929](https://doi.org/10.1038/nature01929) PMID: [12944965](https://pubmed.ncbi.nlm.nih.gov/12944965/)
80. Holmfeldt K, Middelboe M, Nybroe O, Riemann L (2007) Large Variabilities in host strain susceptibility and phage host range govern interactions between lytic marine phages and their Flavobacterium hosts. *Appl Environ Microbiol* 73: 6730–6739. doi: [10.1128/AEM.01399-07](https://doi.org/10.1128/AEM.01399-07) PMID: [17766444](https://pubmed.ncbi.nlm.nih.gov/17766444/)
81. Goodridge L, Gallaccio A, Griffiths MW (2003) Morphological, host range, and genetic characterization of two coliphages. *Appl Environ Microbiol* 69: 5364–5371. doi: [10.1128/AEM.69.9.5364-5371.2003](https://doi.org/10.1128/AEM.69.9.5364-5371.2003) PMID: [12957924](https://pubmed.ncbi.nlm.nih.gov/12957924/)
82. Matsuzaki S, Tanaka S, Koga T, Kawata T (1992) A broad host-range vibriophage, KVP40, isolated from sea water. *Microbiol Immunol* 36: 93–97. doi: [10.1111/j.1348-0421.1992.tb01645.x](https://doi.org/10.1111/j.1348-0421.1992.tb01645.x) PMID: [1584076](https://pubmed.ncbi.nlm.nih.gov/1584076/)
83. Chang HW, Kim KH (2011) Comparative genomic analysis of bacteriophage EP23 infecting *Shigella sonnei* and *Escherichia coli*. *J Microbiol* 49: 927–934. doi: [10.1007/s12275-011-1577-0](https://doi.org/10.1007/s12275-011-1577-0) PMID: [22203555](https://pubmed.ncbi.nlm.nih.gov/22203555/)
84. Kim M, Ryu S (2011) Characterization of a T5-Like Coliphage, SPC35, and Differential Development of Resistance to SPC35 in *Salmonella enterica* Serovar *Typhimurium* and *Escherichia coli*. *Appl Environ Microbiol* 77: 2042–2050. doi: [10.1128/AEM.02504-10](https://doi.org/10.1128/AEM.02504-10) PMID: [21257810](https://pubmed.ncbi.nlm.nih.gov/21257810/)
85. Jiang SC, Paul JH (1998) Gene transfer by transduction in the marine environment. *Appl Environ Microbiol* 64: 2780–2787. PMID: [9687430](https://pubmed.ncbi.nlm.nih.gov/9687430/)
86. Rao VB, Feiss M (2008) The Bacteriophage DNA Packaging Motor. *Ann rev Genet* 42: 647–681. doi: [10.1146/annurev.genet.42.110807.091545](https://doi.org/10.1146/annurev.genet.42.110807.091545) PMID: [18687036](https://pubmed.ncbi.nlm.nih.gov/18687036/)
87. Lohr JE, Chen F, Hill RT (2005) Genomic analysis of bacteriophage Phi JL001: Insights into its interaction with a sponge-associated alpha-proteobacterium. *Appl Environ Microbiol* 71: 1598–1609. doi: [10.1128/AEM.71.3.1598-1609.2005](https://doi.org/10.1128/AEM.71.3.1598-1609.2005) PMID: [15746365](https://pubmed.ncbi.nlm.nih.gov/15746365/)
88. Paul JH, Williamson SJ, Long A, Authement RN, John D, et al. (2005) Complete genome sequence of phi HSIC, a pseudotemperate marine phage of *Listonella pelagia*. *Appl Environ Microbiol* 71: 3311–3320. doi: [10.1128/AEM.71.6.3311-3320.2005](https://doi.org/10.1128/AEM.71.6.3311-3320.2005) PMID: [15933034](https://pubmed.ncbi.nlm.nih.gov/15933034/)

89. Sullivan M, Krastins B, Hughes J, Kelly L, Chase M, et al. (2009) The genome and structural proteome of an ocean siphovirus: a new window into the cyanobacterial 'mobilome'. *Environ Microbiol* 11: 2935–2951. doi: [10.1111/j.1462-2920.2009.02081.x](https://doi.org/10.1111/j.1462-2920.2009.02081.x) PMID: [19840100](https://pubmed.ncbi.nlm.nih.gov/19840100/)
90. Angly F, Youle M, Nosrat B, Srinagesh S, Rodriguez-Brito B, et al. (2009) Genomic analysis of multiple Roseophage SIO1 strains. *Environ Microbiol* 11: 2863–2873. doi: [10.1111/j.1462-2920.2009.02021.x](https://doi.org/10.1111/j.1462-2920.2009.02021.x) PMID: [19659499](https://pubmed.ncbi.nlm.nih.gov/19659499/)
91. Chen F, Suttle CA (1996) Evolutionary relationships among large double-stranded DNA viruses that infect microalgae and other organisms as inferred from DNA polymerase genes. *Virology* 219: 170–178. doi: [10.1006/viro.1996.0234](https://doi.org/10.1006/viro.1996.0234) PMID: [8623526](https://pubmed.ncbi.nlm.nih.gov/8623526/)
92. Yasuike M, Sugaya E, Nakamura Y, Shigenobu Y, Kawato Y, et al. (2013) Complete genome sequence of a novel myovirus which infects atypical strains of *Edwardsiella tarda*. *Genome announce* 1: 00248–12. doi: [10.1128/genomeA.00248-12](https://doi.org/10.1128/genomeA.00248-12)
93. Cui Z, Shen W, Wang Z, Zhang H, Me R, et al. (2012) Complete Genome Sequence of *Klebsiella pneumoniae* Phage JD001. *J Virol* 86: 13843–13843. doi: [10.1128/JVI.02435-12](https://doi.org/10.1128/JVI.02435-12) PMID: [23166250](https://pubmed.ncbi.nlm.nih.gov/23166250/)
94. Comeau AM, Tremblay D, Moineau S, Rattei T, Kushkina AI, et al. (2012) Phage morphology recapitulates phylogeny: The comparative genomics of a new group of myoviruses. *PLoS One* 7: e40102. doi: [10.1371/journal.pone.0040102](https://doi.org/10.1371/journal.pone.0040102) PMID: [22792219](https://pubmed.ncbi.nlm.nih.gov/22792219/)
95. Fileé J, Forterre P, Sen-Lin T, Laurent J (2002) Evolution of DNA polymerase families: Evidences for multiple gene exchange between cellular and viral proteins. *J Mol Evol* 54: 763–773. doi: [10.1007/s00239-001-0078-x](https://doi.org/10.1007/s00239-001-0078-x) PMID: [12029358](https://pubmed.ncbi.nlm.nih.gov/12029358/)
96. Casjens SR (2005) Comparative genomics and evolution of the tailed-bacteriophages. *Curr Opin Microbiol* 8: 451–458. doi: [10.1016/j.mib.2005.06.014](https://doi.org/10.1016/j.mib.2005.06.014) PMID: [16019256](https://pubmed.ncbi.nlm.nih.gov/16019256/)
97. Serwer P, Hayes SJ, Zaman S, Lieman K, Rolando M, et al. (2004) Improved isolation of under-sampled bacteriophages: finding of distant terminase genes. *Virology* 329: 412–424. doi: [10.1016/j.virol.2004.08.021](https://doi.org/10.1016/j.virol.2004.08.021) PMID: [15518819](https://pubmed.ncbi.nlm.nih.gov/15518819/)
98. Huang S, Wang K, Jiao N, Chen F (2012) Genome sequences of siphoviruses infecting marine *Synechococcus* unveil a diverse cyanophage group and extensive phage-host genetic exchanges. *Environ Microbiol* 14: 540–558. doi: [10.1111/j.1462-2920.2011.02667.x](https://doi.org/10.1111/j.1462-2920.2011.02667.x) PMID: [22188618](https://pubmed.ncbi.nlm.nih.gov/22188618/)
99. Catalano CE, Cue D, Feiss M (1995) Virus DNA packaging: the strategy used by phage lambda. *Mol Microbiol* 16: 1075–1086. doi: [10.1111/j.1365-2958.1995.tb02333.x](https://doi.org/10.1111/j.1365-2958.1995.tb02333.x) PMID: [8577244](https://pubmed.ncbi.nlm.nih.gov/8577244/)
100. Garcia P, Monjardin C, Martin R, Madera C, Soberon N, et al. (2008) Isolation of new *Stenotrophomonas* bacteriophages and genomic characterization of temperate phage S1. *Appl Environ Microbiol* 74: 7552–7560. doi: [10.1128/AEM.01709-08](https://doi.org/10.1128/AEM.01709-08) PMID: [18952876](https://pubmed.ncbi.nlm.nih.gov/18952876/)
101. Tapia P, Flores FM, Covarrubias PC, Acuna LG, Holmes DS, et al. (2012) Complete genome sequence of temperate bacteriophage AcaML1 from the extreme acidophile *Acidithiobacillus caldus* ATCC 51756. *J Virol* 86: 12452–12453. doi: [10.1128/JVI.02261-12](https://doi.org/10.1128/JVI.02261-12) PMID: [23087115](https://pubmed.ncbi.nlm.nih.gov/23087115/)
102. Mobberley JM, Authernent RN, Segall AM, Paul JH (2008) The temperate marine phage Phi HAP-1 of *Halomonas aquamarina* possesses a linear plasmid-like prophage genome. *J Virol* 82: 6618–6630. doi: [10.1128/JVI.00140-08](https://doi.org/10.1128/JVI.00140-08) PMID: [18448537](https://pubmed.ncbi.nlm.nih.gov/18448537/)
103. Lan SF, Huang CH, Chang CH, Liao WC, Lin IH, et al. (2009) Characterization of a new plasmid-like prophage in a pandemic *Vibrio parahaemolyticus* O3:K6 Strain. *Appl Environ Microbiol* 75: 2659–2667. doi: [10.1128/AEM.02483-08](https://doi.org/10.1128/AEM.02483-08) PMID: [19286788](https://pubmed.ncbi.nlm.nih.gov/19286788/)
104. Hendrix RW, Smith MCM, Burns RN, Ford ME, Hatfull GF (1999) Evolutionary relationships among diverse bacteriophages and prophages: All the world's a phage. *Proc Nat Acad Sci* 96: 2192–2197. doi: [10.1073/pnas.96.5.2192](https://doi.org/10.1073/pnas.96.5.2192) PMID: [10051617](https://pubmed.ncbi.nlm.nih.gov/10051617/)
105. Ignacio-Espinoza JC, Solonenko SA, Sullivan MB (2013) The global virome: not as big as we thought? *Curr Opin Virol* 3:566–571. doi: [10.1016/j.coviro.2013.07.004](https://doi.org/10.1016/j.coviro.2013.07.004) PMID: [23896279](https://pubmed.ncbi.nlm.nih.gov/23896279/)
106. Ignacio-Espinoza JC, Sullivan MB (2012) Phylogenomics of T4 cyanophages: lateral gene transfer in the 'core' and origins of host genes. *Environ Microbiol* 14: 2113–2126. doi: [10.1111/j.1462-2920.2012.02704.x](https://doi.org/10.1111/j.1462-2920.2012.02704.x) PMID: [22348436](https://pubmed.ncbi.nlm.nih.gov/22348436/)
107. Deng L, Ignacio-Espinoza JC, Gregory AC, Poulos BT, Weitz JS, et al. (2014) Viral tagging reveals discrete populations in *Synechococcus* viral genome sequence space. *Nature* 513: 242–245. doi: [10.1038/nature13459](https://doi.org/10.1038/nature13459) PMID: [25043051](https://pubmed.ncbi.nlm.nih.gov/25043051/)
108. Kogoma T (1996) Recombination by replication. *Cell* 85: 625–627. doi: [10.1016/S0092-8674\(00\)81229-5](https://doi.org/10.1016/S0092-8674(00)81229-5) PMID: [8646771](https://pubmed.ncbi.nlm.nih.gov/8646771/)
109. Haber JE (1999) DNA repair—Gatekeepers of recombination. *Nature* 398: 665–+. doi: [10.1038/19423](https://doi.org/10.1038/19423) PMID: [10227286](https://pubmed.ncbi.nlm.nih.gov/10227286/)
110. Hall SD, Kolodner RD (1994) Homologous pairing and strand exchange promoted by the *Escherichia coli* RecT protein. *Proc Nat Acad Sci* 91: 3205–3209. doi: [10.1073/pnas.91.8.3205](https://doi.org/10.1073/pnas.91.8.3205) PMID: [8159725](https://pubmed.ncbi.nlm.nih.gov/8159725/)

111. Zhang YM, Buchholz F, Muyrers JPP, Stewart AF (1998) A new logic for DNA engineering using recombination in *Escherichia coli*. *Nature Genet* 20: 123–128. doi: [10.1038/2417](https://doi.org/10.1038/2417) PMID: [9771703](https://pubmed.ncbi.nlm.nih.gov/9771703/)
112. Kurochkina LP, Semenyuk PI, Orlov VN, Robben J, Sykilinda NN, et al. (2012) Expression and functional characterization of the first bacteriophage-encoded chaperonin. *J Virol* 86: 10103–10111. doi: [10.1128/JVI.00940-12](https://doi.org/10.1128/JVI.00940-12) PMID: [22787217](https://pubmed.ncbi.nlm.nih.gov/22787217/)
113. Georgopoulos C, Hendrix RW, Casjens SR, Kaiser AD (1973) Host participation in bacteriophage λ head assembly. *J Mol Biol* 76: 45–60. doi: [10.1016/0022-2836\(73\)90080-6](https://doi.org/10.1016/0022-2836(73)90080-6) PMID: [4578100](https://pubmed.ncbi.nlm.nih.gov/4578100/)
114. Keppel F, Rychner M, Georgopoulos C (2002) Bacteriophage-encoded cochaperonins can substitute for *Escherichia coli*'s essential GroES protein. *EMBO Rep* 3: 893–898. doi: [10.1093/embo-reports/kvf176](https://doi.org/10.1093/embo-reports/kvf176) PMID: [12189177](https://pubmed.ncbi.nlm.nih.gov/12189177/)
115. St-Pierre F, Endy D (2008) Determination of cell fate selection during phage lambda infection. *Proc Nat Acad Sci* 105: 20705–20710. doi: [10.1073/pnas.0808831105](https://doi.org/10.1073/pnas.0808831105) PMID: [19098103](https://pubmed.ncbi.nlm.nih.gov/19098103/)
116. Joh RI, Weitz JS (2011) To Lyse or Not to Lyse: To Lyse or Not to Lyse: Transient-Mediated Stochastic Fate Determination in Cells Infected by Bacteriophages. *PLoS Comput Biol* 7: e1002006. doi: [10.1371/journal.pcbi.1002006](https://doi.org/10.1371/journal.pcbi.1002006) PMID: [21423715](https://pubmed.ncbi.nlm.nih.gov/21423715/)
117. Kourilsk P (1973) Lysogenization by bacteriophage lambda. I. Multiple infection and lysogenic response. *Mol Gen Genet* 122: 183–195. doi: [10.1007/BF00435190](https://doi.org/10.1007/BF00435190)
118. Stewart FM, Levin BR (1984) The population biology of bacterial viruses: why be temperate? *Theor Popul Biol* 26: 93–117. doi: [10.1016/0040-5809\(84\)90026-1](https://doi.org/10.1016/0040-5809(84)90026-1) PMID: [6484871](https://pubmed.ncbi.nlm.nih.gov/6484871/)
119. Weinbauer MG, Brettar I, Hofle MG (2003) Lysogeny and virus-induced mortality of bacterioplankton in surface, deep, and anoxic marine waters. *Limnol Oceanogr* 48: 1457–1465. doi: [10.4319/lo.2003.48.4.1457](https://doi.org/10.4319/lo.2003.48.4.1457)
120. Boras JA, Sala MM, Vázquez-Domínguez E, Weinbauer MG, Vaqué D (2009) Annual changes of bacterial mortality due to viruses and protists in an oligotrophic coastal environment (NW Mediterranean). *Environ Microbiol* 11: 1181–1193. doi: [10.1111/j.1462-2920.2008.01849.x](https://doi.org/10.1111/j.1462-2920.2008.01849.x) PMID: [19207563](https://pubmed.ncbi.nlm.nih.gov/19207563/)
121. Brüssow H, Canchaya C, Hardt W-D (2004) Phages and the evolution of bacterial pathogens: from genomic rearrangements to lysogenic conversion. *Microbiol Mol Biol R* 68: 560–602. doi: [10.1128/MMBR.68.3.560-602.2004](https://doi.org/10.1128/MMBR.68.3.560-602.2004)
122. Paul JH (2008) Prophages in marine bacteria: dangerous molecular time bombs or the key to survival in the seas? *ISME J* 2: 579–589. doi: [10.1038/ismej.2008.35](https://doi.org/10.1038/ismej.2008.35) PMID: [18521076](https://pubmed.ncbi.nlm.nih.gov/18521076/)
123. Mann N, Cook A, Millard A, Bailey S, Clokie M (2003) Marine ecosystems: Bacterial photosynthesis genes in a virus. *Nature* 424: 741–741. doi: [10.1038/424741a](https://doi.org/10.1038/424741a) PMID: [12917674](https://pubmed.ncbi.nlm.nih.gov/12917674/)
124. Sharon I, Battchikova N, Aro E, Giglione C, Meinel T, et al. (2011) Comparative metagenomics of microbial traits within oceanic viral communities. *ISME J* 5: 1178–1190. doi: [10.1038/ismej.2011.2](https://doi.org/10.1038/ismej.2011.2) PMID: [21307954](https://pubmed.ncbi.nlm.nih.gov/21307954/)
125. Breitbart M, Thompson L, Suttle C, Sullivan M (2007) Exploring the vast diversity of marine viruses. *Oceanography* 20: 135–139. doi: [10.5670/oceanog.2007.58](https://doi.org/10.5670/oceanog.2007.58)
126. Sullivan MB, Coleman ML, Weigle P, Rohwer F, Chisholm SW (2005) Three *Prochlorococcus* cyanophage genomes: signature features and ecological interpretations. *PLoS Biol* 3: e144. doi: [10.1371/journal.pbio.0030144](https://doi.org/10.1371/journal.pbio.0030144) PMID: [15828858](https://pubmed.ncbi.nlm.nih.gov/15828858/)
127. Desiere F, McShan WM, van Sinderen D, Ferretti JJ, Brüssow H (2001) Comparative genomics reveals close genetic relationships between phages from dairy bacteria and pathogenic streptococci: Evolutionary implications for prophage-host interactions. *Virology* 288: 325–341. doi: [10.1006/viro.2001.1085](https://doi.org/10.1006/viro.2001.1085) PMID: [11601904](https://pubmed.ncbi.nlm.nih.gov/11601904/)
128. Weitz JS, Poisot T, Meyer JR, Flores CO, Valverde S, et al. (2013) Phage-bacteria infection networks. *Trends Microbiol* 21: 82–91. doi: [10.1016/j.tim.2012.11.003](https://doi.org/10.1016/j.tim.2012.11.003) PMID: [23245704](https://pubmed.ncbi.nlm.nih.gov/23245704/)
129. Allers E, Moraru C, Duhaime MB, Beneze E, Solonenko N, et al. (2013) Single-cell and population level viral infection dynamics revealed by phageFISH, a method to visualize intracellular and free viruses. *Environ Microbiol* 15: 2306–2318. doi: [10.1111/1462-2920.12100](https://doi.org/10.1111/1462-2920.12100) PMID: [23489642](https://pubmed.ncbi.nlm.nih.gov/23489642/)